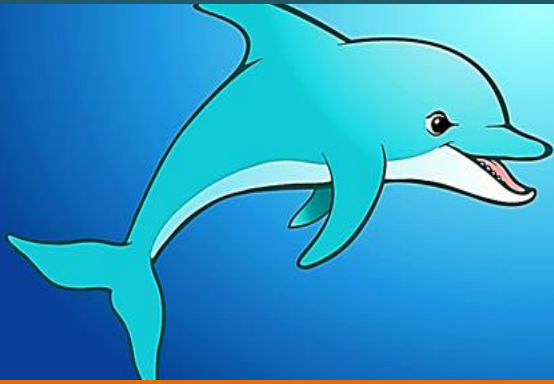


Bayview Elementary School



The mission of Bayview Elementary School is to provide each student with a safe, supportive environment, promoting responsible citizenship, leadership and dedication of learning.

NEWSLETTER for November 2015

ATTENDANCE MATTERS!

We would like all students to be in the building by 8:15am. This may seem like a lot to ask, but in order for there to be the greatest opportunity for learning to occur, students are EXPECTED here on time. It is a disruption for the teacher, student and class when a student arrives late to class.

In support of the new initiative by ASD-S, Bayview School will now be giving out late slips to students who come through our doors after 8:20 am. These late slips will be taken home by the student and are required to be signed by the parent/guardian. It is vitally important for everyone to recognize the importance of attendance and that it very much matters when a student is not at school or late on a regular basis. Thank you for caring about your child's education and sharing the message that Attendance Matters!

VISITORS

ALL visitors coming in to Bayview School must report to the main office to get a visitors pass, as per the Anglophone South School District.

DATES TO REMEMBER

November 4 – Bayview's Pizza Night at Papa John's East
November 10 – Picture retake day/Cenotaph Walk
November 11 – Remembrance Day (No school)
November 20 – PJ Day (\$1.00)
November 26 – Parent Teacher Conferences 4 – 7:00pm
November 27 – Professional Development for Teachers in the morning and Parent Teacher Conferences from 12:30 – 2:30 (No school for students)

REMEMBRANCE DAY CEREMONY

As we do each year, the entire school will be walking to the cenotaph at the Jervis Bay Legion on Tuesday, November 10th for our Remembrance Day Ceremony. It is usually chilly and windy so be certain your child is dressed warmly for this event. I am also looking for one of our students to lay the wreath at the cenotaph at the Ceremony that is held each year on the 11th. If your family is going to this event and would like to lay the wreath on behalf of Bayview School please let me know.

POPPIES for Sale

Poppies are for sale at Bayview School! Come to the office with a donation and get your poppy. Remember those who fought so bravely for us and wear your poppy proudly!



RECESS AND LUNCH BREAKS

All students are required to go outside during these times. Many times children come to school without proper clothing on. I ask for your help in seeing that appropriate clothing is worn to school throughout the school year. It is very windy on our back field and the children are often saying that they are cold when they come in. Students should be wearing proper clothing for the weather outside.

STORM DAYS

Just a reminder that schools may be closed on particularly stormy days during the slushy, snowy season and announcements to that effect will be made on all local radio stations beginning around 6:30am. Please be on the alert for these. It may be necessary to close schools during the day. In case this should happen, please make certain your child knows where to go should they arrive home and find you are not there. This is very important that you have a discussion regarding this. As well, ensure we have all updated phone numbers as every effort is made to contact you if this happens. You could also call the **SNOW LINE at 643-7669**.



KINDNESS WEEK

November 16 - 20th is Kindness Week. There will be lots of activities happening where students are able to show their kindness to others. What can you do for Kindness Week? How are you going to show kindness to others? These are very important questions to ask yourself...ask others too what they are doing!

On the Friday of Kindness Week, we are holding a **Pajama Day** for all students. Students can pay \$1.00 and come to school in their pajamas in recognition of **National Child Day** on Friday, November 20th!

PARKING

There is to be **NO PARKING OR DRIVING** at the front of the school as this is the drop off and pick up for buses **ONLY**. Please drop off students at the side of the building by the sidewalk to ensure their safety. Drive into the driveway by the basketball court and continue to drive out the driveway by the gym. This is clearly marked on the pavement and we must ensure the safety of the children. If you need to come into the building for any reason, please park in the lower parking lot and come in. Do NOT park in the drive-thru drop off zone for students.

PROPER FOOTWEAR IN THE GYM

As the snow prepares to fly, and the winter boots start to come out, I just wanted to remind parents to ensure that their child has a pair of sneakers to wear for all gym classes. Also, many students are coming to class with laces, however are not able to tie them. My main concern is for the safety of the child, and having shoes that are properly attached to their feet is very important. If your child has "tie shoes," please take time to practice the skill with them at home, as many students lose time away from activities waiting for me to tie the shoes. Also I have noticed that some students have clips on their laces to save tying them. These clips pose a great safety concern as they do not stay tight and leave little tails, which cause students to trip.

Please ensure your child arrives with appropriate sneakers for class to allow them to get the most out of being active.

Coming up....

Holiday Concert is on Tuesday, December 15th

Holiday Tree will be set up again this year...remember to begin gathering some nonperishable food items to put under it as we donate this to our local food banks.

We will be having our huge Holiday Basket draw again this year. What will you be donating to our Basket? Send any items along as we are getting things organized now.