

# Lightning News



April 22nd – April 26th



# PBIS

Today we had a celebration that identified students who follow the Bolt Matrix consistently in every class! We were able to recognize 80 students throughout Grade 6,7 and 8.

We will continue to encourage and support students in their efforts and hope to see that number rise in Term 3!

<b>BOLT</b>	<b>B</b> E RESPECTFUL	<b>O</b> WN YOUR LEARNING	<b>L</b> IVE SAFELY	<b>T</b> AKE RESPONSIBILITY
<b>ARRIVAL/ DISMISSAL/ TRANSITION TIME</b>	Follow adult directions. Help others.  Wait outside the classroom until you are invited into the classroom by the teacher. Wait until you are dismissed at the end of class.	Be prepared for class. Take homework home.  Be prompt. Go to your locker during scheduled locker time.	Enter/exit school in an orderly manner. Walkers leave school at dismissal time. Bus students go to designated area. Keep hands, feet & hurtful comments to yourself.	Put belongings in designated areas. Promptly enter the school when told and report to your homeroom in a timely fashion. Sign in at office if arriving late.
<b>INDOOR/ MORNING – Due to weather</b>	Follow adult directions. Help others. Use quiet voices. Ask to use the washroom.		Take off outdoor footwear before entering gym. Keep hands & feet to yourself.	Go to your locker after being dismissed from the gym.
<b>WASHROOM/ CHANGING ROOM</b>	Clean up after yourself. In changing room tidy your belongings and take them when you, when you leave.	Use washroom before class in the morning, during breaks or during lunch time.	Report unsafe behaviour or conditions.	Wash hands. Flush toilet. Keep washroom clean, by putting the garbage in the garbage can.
<b>LUNCH Areas Lunchroom / Balcony / Learning Commons</b>	Keep facility clean. Follow adult directions. Use quiet voices. Ask to use the washroom.		Keep hands & feet to yourself. Stay in your seat. Wait until you are dismissed before leaving.	Be cooperative. Respect the space and school property by recycling and putting your trash in garbage cans.
<b>CLASSROOMS TECHNOLOGY LAB LEARNING COMMONS</b>	Listen to adult instructions. Respect others personal Space.	Bring required materials to class. Submit assignments on time. Catch up on missed work.	Follow all rules for fire, evacuations & lockdowns.  Follow safety rules for using all equipment. If in doubt, ask.	Leave your desk neat and tidy. Use equipment & supplies as intended.
<b>ASSEMBLIES/ PRESENTATIONS</b>	Remain seated until dismissed. Listen quietly to the presenter. Be respectful when showing appreciation.	Be a good listener.	Always walk. Remain seated until dismissed. Respect personal space.	Enter & exit quietly. Use the washroom before the assembly.
<b>OUTDOORS</b>	Follow adult directions.	Respect boundaries. Do not leave school property.	Benches are for sitting. Stay off the stairs. Keep your hands & feet to yourself.	Enter the building quietly. Report any incident to staff on duty when they happen. Return borrowed sports equipment.

# April 22 is Earth Day

- Join us to honor and celebrate our remarkable planet on this extraordinary day. Earth Day is a reminder of the importance of our environment, it is a day to remind us to take steps toward a healthier planet and brighter future.
- Please come join us on Monday, April 22<sup>nd</sup> as we clean up our school yard. We also plan to start building our Greenhouse and community garden.

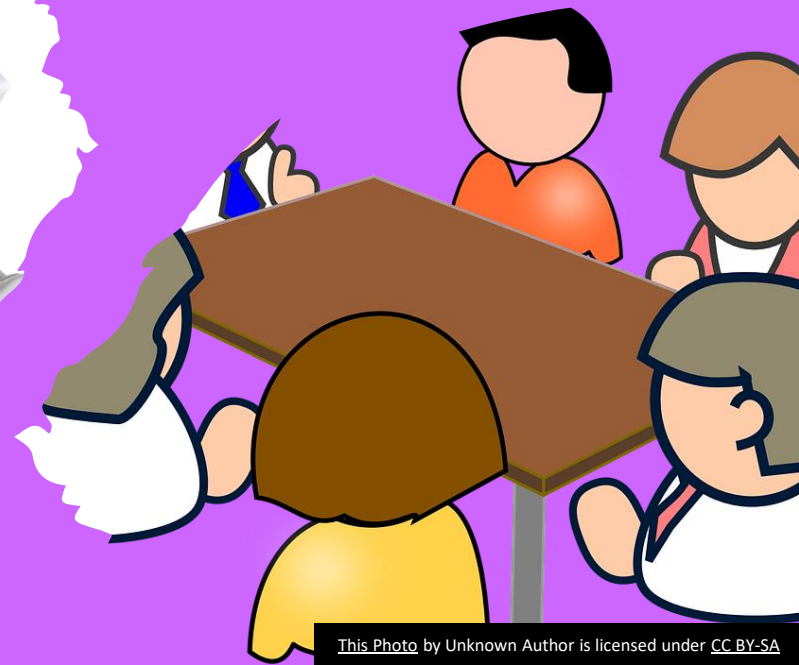


#EarthDay

# PSSC

The PSSC meeting will be this Monday, April 22<sup>nd</sup> from 6:00 p.m. – 7:00 p.m. In our meeting room, in Room 28.

# Meeting



# National French Immersion Day- April 24th

This day is to promote French Immersion in our schools. The theme this year is “Nos langues, notre trait d’union” which means “Our Languages: The Bridge That Unites”



# School Dance is Thursday, April 25<sup>th</sup>

The “Spring Fling” dance will be Thursday, April 25<sup>th</sup> from 6:30 p.m. – 8:30 p.m. It is \$5.00 at the door for all students.

Sign ins will be completed with Mrs. Muise or Ms. Ferguson at noon or breaks.







[This Photo](#)

[CC BY-NC](#)

# Poetry Competition

- This is the last week to submit your poem to Ms. Ferguson in the office. The deadline for submissions is Friday, April 26<sup>th</sup>.
- The winner will be announced on Monday, April 29<sup>th</sup> and the prize of a \$50.00 gift card from Indigo will be awarded.



## Lunch and Snack Options

**Lunch Option Wednesday:** A healthy lunch is available to pre-order on Cashless Schools for Wednesdays. It is \$2.50.

**Pizza Friday:** If your child would like cheese pizza, please use Cashless Schools. Pizza is not available unless it is pre-ordered. It is \$2.50 per slice.

**Canteen:** The canteen will be open on Friday selling healthy snacks and drinks for \$1.00 - \$2.00.

**Breakfast Program:** Nutritious items are available in the lobby every morning.





# Athletics



Monday- Boys' practice from 3:00-4:30

Tuesday- Boys' Home game vs. PES

Wednesday- Girls' practice from 3:00-4:30

Thursday- Girls' Away game @ PES

## Mrs. Natasha Nolan

Educational Assistant

EA Experience: 7 years

Years at Barnhill: First year

What do you love about being an EA? “Being able to help and guide children to be the best they can be!”

Interest/Activities: Marvel and sport lover

Interesting Fact: Husband Kyle is also an EA

Family: husband Kyle, and two kids Casey & Finnegan and a Cat Nemo and a dog Oakie.



# Academic Support:

ELA support will be offered on Wednesdays at lunch and afterschool for anyone from any grade.

Lunch Help: 12:00 - 12:50

Mr. Smith's Room 37 at 12:00. Bring your lunch, work and something to write with.

Afterschool Help: 3:00 - 4:00

Ms. Seales' Room 20 afterschool. Please make arrangements to be picked up no later than 4 p.m.



Math support will be offered on Thursdays at lunch for anyone from any grade.

Lunch Help: 12:00 - 12:50

Mr. MacDonald's Room 10 at 12:00. Bring your lunch, math work and something to write with.



[This Photo](#) by Unknown Author is licensed under [CC BY-SA](#)

# April is Autism Awareness Month

People with Autism often have problems with social communication and interaction. They also display restricted or repetitive behaviors or interests. People with Autism may also have different ways of learning, moving, or paying attention.

# Mathematics

This Photo by Unknown Author is licensed under [CC BY-NC-ND](#)

## **April is Mathematics Awareness Month**

Why is math so important?

Math provides an effective way of building mental discipline and encourages logical reasoning and mental rigor.

It also plays a crucial role in understanding the contents of other school subjects such as science, social studies, and even music and art.



# On the horizon:



Barnhill Drama Club presents, The Crimson House Murder! This will be a live performance at our school on May 15<sup>th</sup> and 16<sup>th</sup> at 7 p.m. Save the date for this amazing performance! Tickets will be on sale soon.

Also, we are looking for parent volunteers with carpentry skills to help build some set pieces! If you can offer some support, please contact Ms. Dennis at [andrea.dennis@nbed.nb.ca](mailto:andrea.dennis@nbed.nb.ca).

# Babysitting Course

- We will be offering the Babysitting Course again this year.
- It will be held at lunchtime for 5 consecutive weeks. We will have the dates confirmed next week.
- If you are interested, the cost is \$40 and can be brought to Ms. Vanderbeck to confirm your registration before the start date.



# UNB Saint John Summer Sport camps registration is open!

This summer we have more to offer: volleyball, badminton and basketball

Here's the link to register:

<https://www.unb.ca/saintjohn/athletics/community/camps-clinics.html>





Learn More



## OVERNIGHT SUMMER CAMPS

Ages 5 to 16. Programs run from June 30 to August 23



- Arts & Crafts
- Earth Education
- Performances
- Campfires
- Swimming
- Ropes & Climbing
- Camping
- Camp Songs
- and much more!

**We provide a safe and supportive environment for youth to take risks and grow, creating memories and developing skills that will last a lifetime.**

*Financial Aid & Bursaries are available.*

**311 Route 850  
Kingston, NB E5N 1W6**

**glenburn@saintjohny.ca**

**1-506-646-2104**

**Have a great week Barnhill!  
And remember...**

**BARNHILL DOES THEIR BEST!**

**Better  
Every  
Single  
Time**

