

What you need to know CHS 2020-2021 School year

Parents are to **screen their children for symptoms** before sending to school **everyday**. If your child has **2 or more** of the following symptoms they are to remain home:

- Fever/feverish
- sore throat
- Headache
- runny nose
- a new cough or worsening chronic cough
- new onset of fatigue or muscle ache
- diarrhea, loss of taste or smell
- purple markings on the fingers or toes (only in children).

If your child **develops 2 or more** symptoms while at school:

- School will call
- Symptomatic child placed in the sick room
- Disposable medical mask given to them
- Your child must be picked up **within the hour**
- When you arrive (mask must be worn):
 - buzz to get in, sign out your child, we will bring your child to you.
- Contact 811 or your medical provider and self isolate at home.

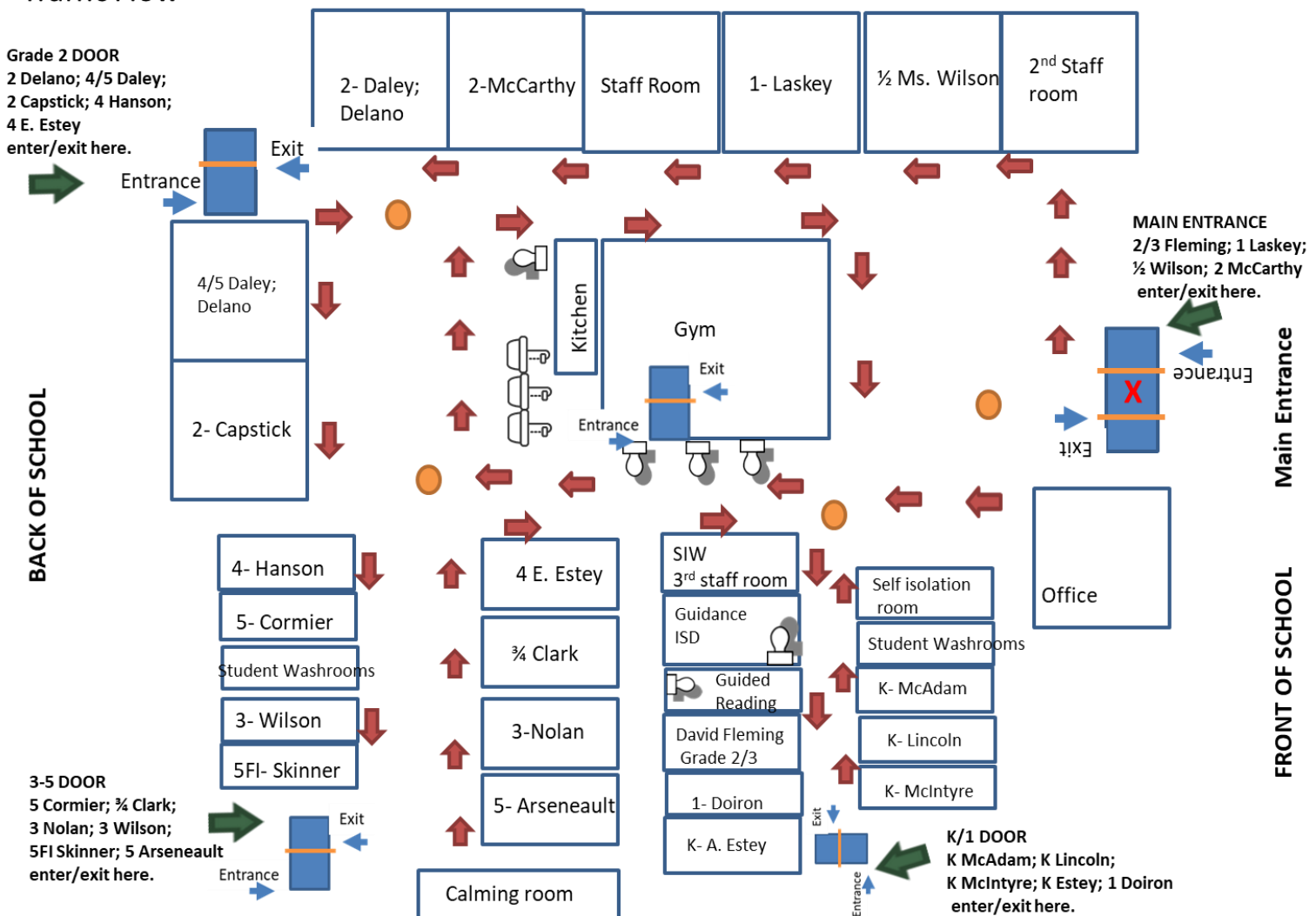
Dropping off or picking up your child

Below is the list of classes and the entrance/exit students will use, support staff will be outside Both in the AM and PM to assist. Drop off between 7:55-8:20, pickup K-2 by 2pm; 3-5 by 3pm.

Class	Entrance/Exit
K McIntyre; K Lincoln; K McAdam; K A. Estey; 1 Doiron	K-1 entrance/exit
2/3 Fleming; ½ Wilson; 1 Laskey; 2 McCarthy	Main entrance
2 Delano; 2 Capstick; 4/5 Daley; 4 Hanson; 4 E. Estey	Grade 2 entrance/exit
¾ Clark; 3 Wilson; 3 Nolan; 5 Cormier; 5 Arseneault; 5FI Skinner	3-5 Entrance/Exit

Below is the map showing the entrance/exits as well – Lots of us staff will be outside with orange vests On to help! Please try not to block the traffic circle in the front of the school. Parents/caregivers please stay in your car and remember to physically distance from other parents/caregivers. Thanking you in advance! Students will come directly into their door in the morning and go directly into their class – no playground play in the morning. If your child arrives **AFTER 8:10 – they are to use the MAIN entrance of the school.**

Champlain Heights Map Covid-19 Operational plan Traffic Flow



VISION – ‘Inspiring Lifelong Learning through Exploration in a Safe Place’

MISSION – ‘We will Strive to meet the needs of the whole child by providing opportunities to learn in many Different ways in a safe environment. As staff, we will empower students to realize their self worth and Individual potential in their journey to become productive citizens’

Champlain Heights School

111 Champlain Drive, Saint John, NB E2J 3E4

(506) 658-5335 Fax: (506) 643-6095

<http://champlainheights.nbed.nb.ca>

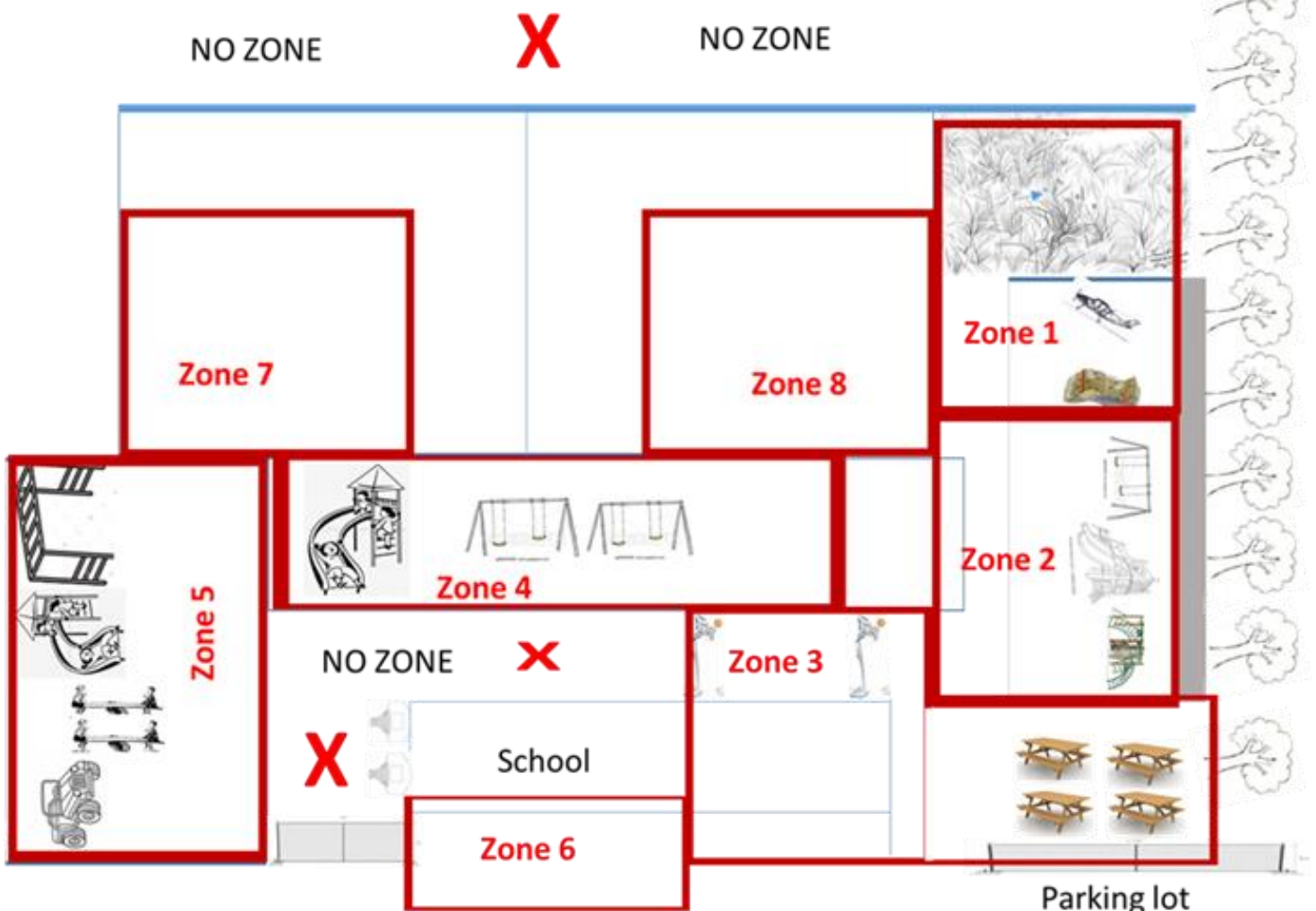
Principal: Mrs. K. Young

Vice Principal: Ms. C. Vibert

'Inspiring lifelong learning through exploration in a safe place'

- Parent/guardians/caregivers will need to book an appointment ahead of time to enter the school, **UNLESS** it is an emergency, or we have called you to pick up your child. A community mask must be worn by all visitors to enter the building.
- Students need to have school supplies, 2 bottles of water (less trips to refill), community mask (2 if possible). Water filling stations are available at all water fountains.
- Toys and other items to play with at home should not come to school with your child unless otherwise prearranged with Principal.
- Below is the Playground map of our zones, students will stay with their bubble class for the entire day. Students will hand sanitize before going outside and wash their hands when they come in from the school yard. Student community masks will not need to be worn by your child while they are in their class learning as they are in a bubble. Mask will be worn when going to the bathroom and when entering/exiting the building.
- Students will participate in physical education classes and weather permitting most will be outside.
- Music will continue and Mr. Smith will be going to each class.

Champlain Heights Playground Zones 2020-2021



We are so very excited to welcome your child (ren) back to school!
My work e-mail is Kathy.young@nbed.nb.ca if you every need to reach out. ☺

VISION – 'Inspiring Lifelong Learning through Exploration in a Safe Place'

MISSION – 'We will Strive to meet the needs of the whole child by providing opportunities to learn in many Different ways in a safe environment. As staff, we will empower students to realize their self worth and Individual potential in their journey to become productive citizens'