



ANGLOPHONE WEST SCHOOL DISTRICT

Sustainability Study Florenceville Elementary School



Public Meeting #1 Agenda

- Introductions
- Review of Provincial Policy 409 Multi-Year School Infrastructure Planning
- Presentation of Information – Florenceville Elementary School
- Question and Answer
- What's Next?
 - o Online Resources and Feedback
 - o Next Meetings



*Excited. Involved.
Prepared.*

Provincial Policy 409

Multi-year School Infrastructure Planning

- Outlines a number of responsibilities to do with facilities in our system
- Sections 6.4, 6.5, 6.6 and 6.7 are relevant for sustainability studies
- Three Public Meetings
 - Meeting 1 – Presentation of information from District regarding school
 - Meeting 2 - Presentation from stakeholders regarding their thoughts on the sustainability of the school and relevant factors
 - Meeting 3 – Final review of information by District Education Council (DEC) and subsequent motion on next steps



Provincial Policy 409

Multi-year School Infrastructure Planning

- Three Possible Outcomes
 - o Maintain the status-quo at Florenceville Elementary School
 - o Provide for repairs to Florenceville Elementary School
 - o Close Florenceville Elementary School and include students in a new K – 8 school with location and catchment areas to be determined during the Major Capital Process.
- Public meetings provide the DEC with information to make an informed decision.



*Excited. Involved.
Prepared.*

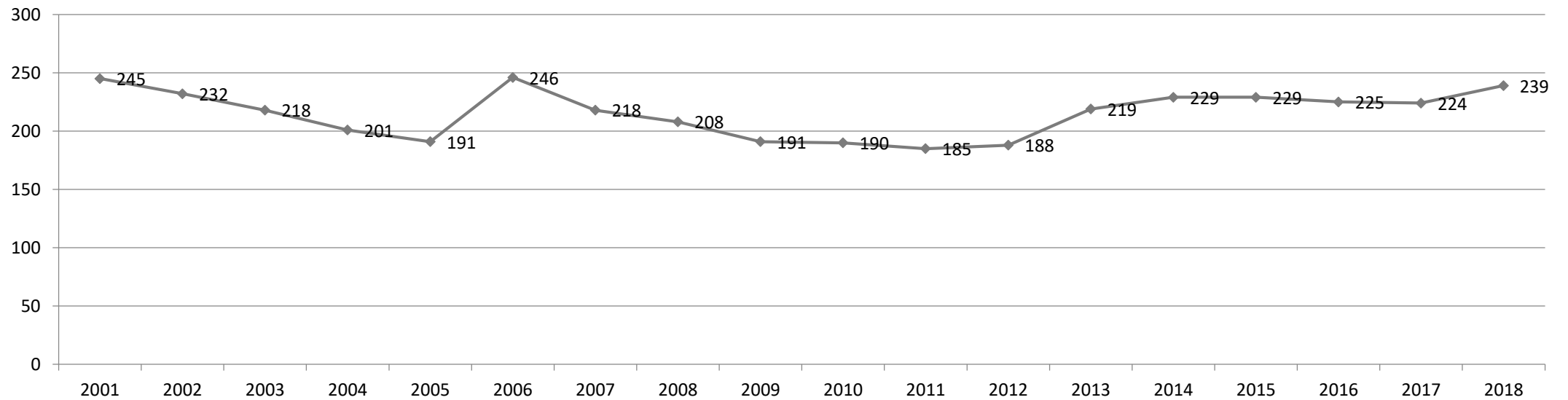
Information to be Presented

- Enrolment
- Quality of Education Programs & Services
- Provincial Assessment Results
- Transportation
- Finances
- Impact on Other Schools
- Building Challenges/Health & Safety
- Impact on Local Community
- Economic Development
- Vision for New School



Enrolment

School Enrolment Trends 2001 to Present



*Excited. Involved.
Prepared.*

Enrolment By Grade Level: Florenceville Elementary School

	2012	2013	2014	2015	2016	2017	2018	2019	Projected Enrolment				
									2020	2021	2022	2023	2024
K	24	40	24	29	27	29	29	24	33	28	27	23	28
1	31	24	42	24	28	34	34	33	33	42	36	36	32
2	23	32	24	40	25	27	40	34	40	33	42	36	36
3	46	40	54	43	53	45	40	39	34	40	33	42	36
4	38	46	38	53	40	51	47	40	40	34	40	33	42
5	26	37	47	40	52	38	49	45	40	40	34	40	33
Total	188	219	229	229	225	224	239	215	220	217	212	210	207



*Excited. Involved.
Prepared.*

Quality of Education Programs & Services

Educational Staff – Florenceville Elementary School

Full Time Equivalent (FTE)	2018-2019		2019-2020	
	Provincial Staffing Formula 2018-2019	Actual 2018-2019	Provincial Staffing Formula 2019-2020	Actual 2019-2020
Classroom Teachers	16.50 FTE	16.50 FTE	14.30 FTE	14.30 FTE
Administration	0.96 FTE	0.90 FTE	0.86 FTE	0.90 FTE
Guidance	0.48 FTE	0.50 FTE	0.43 FTE	0.50 FTE
Resource	1.33 FTE	1.00 FTE	1.19 FTE	1.00 FTE
Additional FTE	0.00 FTE	0.20 FTE	0.00 FTE	0.20 FTE
Total	19.26 FTE	19.10 FTE	16.77 FTE	16.90 FTE



Maximum Class Sizes

Grade Level	Maximum Number of Students
K-2	21
3	26
K-3 Combined Classes	16
Grades 4-6	28
Grades 3-5 Combined Classes	23
Grades 7-12	29
Grades 5-12 Combined Classes	24



*Excited. Involved.
Prepared.*

Quality of Education Programs & Services

Student Teacher Ratio

	Provincial Staffing Formula		Actual	
Year	Total Number Student: Ratio	Student: Teacher	Total Number Student: Ratio	Student: Teacher
2018-2019	239:19.26	12.41:1	239:19.10	12.51:1

	Provincial Staffing Formula		Actual	
Year	Total Number Student: Ratio	Student: Teacher	Total Number Student: Ratio	Student: Teacher
2019-2020	215:16.77	12.82:1	215:16.90	12.72:1



Support Staff Information

Full Time Equivalent (FTE) 2018-2019	Florenceville Elementary School
Educational Assistants	120 hours per week (4.0 FTE)
Administrative Assistant II	36.25 hours per week (1.0 FTE)
School Library Worker I	8.50 hours per week (.23 FTE)
Custodian I	68.33 hours per week (1.71 FTE)



Support Staff Information

Full Time Equivalent (FTE) 2019-2020	Florenceville Elementary School
Educational Assistants	120 hours per week (4.0 FTE)
Student Attendant	8.25 hours per week (0.28 FTE)
Administrative Assistant II	36.25 hours per week (1.0 FTE)
School Library Worker I	8.5 hours per week (.23 FTE)
Custodian I	68.33 hours per week (1.71 FTE)



Core Curriculum and Supports

	Early French Immersion	Late French Immersion	Gymnasium	Music/Fine Arts/Specialists	EST-Resource	EST-Guidance	EST-Literacy	EST-Math	EST-French Immersion	EST-Science	Science Lab	Computer Lab
Florenceville Elementary School	Yes	No	Yes, not regular size, formal name is multi-purpose room	Yes	Yes	Yes	17 weeks by District EST-L 18-19 Projected 17 weeks by District EST-L 19-20	7 weeks by two District EST-N 18-19 Projected 6 weeks by District EST-N 19-20	Monthly check-ins/visits by EST-F 18-19 Monthly check-ins/visits by EST-F 19-20	Support for Environmental Showcase by EST-S 18-19 Projected 2 days by EST-S 19-20	No	No



Quality of Education Programs & Services

- Students from Florenceville Elementary School enter the English Prime program at Florenceville Elementary School beginning in Grade K.
- Grade K students from Florenceville Elementary School can choose to enter the English Prime or Early French Immersion programs at Florenceville Elementary School beginning in Grade 1 and stay at Florenceville Elementary School until the end of Grade 5.
- Grade K students from Centreville Community School, Bath Community School, and Bristol Elementary School can choose to enter Florenceville Elementary School for Early French Immersion.
- Grade 5 students from Florenceville Elementary School enter Florenceville Middle School for English Prime or late French Immersion programs beginning in Grade 6.
- Grade 5 students from Florenceville Elementary School who entered French Immersion at Grade 1 enter Florenceville Middle School for Immersion for continue education.



Special Events that Encourage Community School Partnerships

- Home and School Association
- Outdoor Learning Centre – “Plantopia”, Carleton North Community Foundation
- Edible Tree grant -Tree Canada, Brick Furniture
- Muddy Boots Learning Centre
- Ducks Unlimited
- Artist in Residence grants – Victoria Hutt
- ArtSmart grants
- Outdoor Vegetable Gardens – GAIA Club
- “AG in the Classroom” – Falls Brook Centre
- BioBlitz – Nature NB
- Orange Shirt Day/ Woodstock First Nation
- Drama – Community volunteers
- Music Festival – Carleton North High School
- Christmas Concerts
- Remembrance Day Ceremony-Colour Guard
- Shriners
- Breakfast Program – 60 volunteers from businesses/church groups
- Reading Buddies program, hydroponics grow units – McCain
- Elf Program
- Christmas Readers – male readers from businesses/church groups

For a sample of community activities and school partnerships as presented by the school and for school newsletters, please view the school’s website:

<http://web1.nbed.nb.ca/sites/ASD-W/fes/Pages/default.aspx>



*Excited. Involved.
Prepared.*

Special Events that Encourage Community School Partnerships

- Florenceville-Bristol Recreation Council – partnered with the town for Wellness Week
- Florenceville-Bristol Town – recycling
- Scholastic Book Fair/Science East
- WISP Program (Writers in the Schools)
- Hackmatack – Andrew and Laura McCain Library
- Fred Fox – Terry Fox’s Brother
- TNB/Calithumpians
- Food Bank/Farm Credit Corporation – Breakfast Program, food drive
- Roots of Empathy
- Earth Day Celebrations
- Multicultural Fair – Love your Neighbour Event
- Andrew and Laura McCain Gallery – various field trips, artists lead art clubs
- Annual Volunteer Breakfast – 75-100 volunteers

See [Appendix A](#) for details.

For a sample of community activities and school partnerships as presented by the school and for school newsletters, please view the school’s website:

<http://web1.nbed.nb.ca/sites/ASD-W/fes/Pages/default.aspx>



*Excited. Involved.
Prepared.*

Student Voice

- GAIA
- Recycling, composting
- Student Leadership group – Bath Manor at Christmas
- Fox Dens
- Interest Surveys
- Global Competency Project
- Video announcements
- School TV monitor – highlights students (run by students)
- Kudos Awards
- Trivia Night
- Meduxnekeag Showcase in partnership with Meduxnekeag River Association
- Student clubs: noon hour clubs, choir, chess, minecraft track and field, Hackmatack

See [Appendix A](#) for details.



*Excited. Involved.
Prepared.*

Provincial Assessment Results

Grade 2 & Grade 4 Reading, Mathematics & Science
 Florenceville Elementary School

Year	Grade	Assessment	Florenceville Elementary School	District	Province
2011-2012	Grade 2	Reading	72.9%	78.0 %	79.1 %
2012-2013			72.0%	80.3 %	79.5 %
2013-2014			74.2%	76.8 %	77.5 %
2014-2015			73.9%	77.4%	76.9 %
2015-2016			72.2%	75.2 %	73.8 %
2016-2017			61.5%	75.9%	75.7%
2017-2018			75.0%	72.2%	71.2%
2018-2019			Grade 2 Assessment Discontinued by the Province		
2018-2019	Grade 4	English Reading	65.3%	65.7%	67.2%
		FSL Reading Early FI	72.7%	61.8%	64.5%
		Mathematics	57.1%	62.4%	62.3%
		Science	65.3%	60.3%	61.0%



Involved.

Prepared.

School Benefits

- French Immersion feeder school
- Diversity – we are a multicultural school community because of McCain Technology Centre/IBM
- Staff Teaming – all staff part of committees (Wellness, Core Leadership, GAIA/Outdoor Learning, and STEAM)
- Outdoor Learning/natural playground (Plantopia)
- Community Schools Coordinator
- Flexible Seating
- SORA pilot school (provincial e-library)
- Support for beginning teachers
- Proximity to NB Trail and Muddy Boots Learning Centre

See [Appendix A](#) for details.



*Excited. Involved.
Prepared.*

School Challenges

Space:

- Although there are 4 portable classrooms, FES is still tight for space. Although there is one multi-purpose classroom, it is often used by the various stakeholders that visit the school. This leaves the school often scrambling to find spaces for these people to work.

Gym:

- The gym is very small and is in the middle of the school. People have to travel through the gym to get to classrooms on the other side of the school. It is difficult to offer intramural programs as the gym is always being used for Phys. Ed classes (too small to combine classes). The gym is not used by the community as the facility is not large enough to host sports events.

Kitchen facilities:

- The kitchen is used mainly for our school's breakfast program. The school has been given the opportunity to use Rosemary McCain money for hot lunch programs and have had to be inventive with our kitchen facilities/ no cafeteria. Last year, the food for the program was prepared elsewhere and then brought back to the school and served by parent volunteers.

Afterschool programming:

- It is difficult to provide afterschool programs because of busing. FES is a rural school and most students travel by bus. There are limits to the enrichment programs that can be offered. Mostly all programs are offered within the school day (lunch hour/third recess) so that all students have access.



*Excited. Involved.
Prepared.*

Building Summary

- The school is a one story 1850 sqm brick and concrete structure, with a wood framed roof, built in 1966.
- There are 12 classrooms, a library, a gymnasium (multi-purpose room) and a kitchen but no cafeteria.
- There are also 4 portable classrooms attached to the school.



Functional Capacity

Functional Capacity Data	Student Enrollment	Number of Classrooms	Classrooms In Use	School Capacity	Capacity Rating
Based on 24 students per class	239	12	12	288	83.0%



*Excited. Involved.
Prepared.*

Building Challenges/Health & Safety

- There is no sprinkler system.
- There is no ventilation system.
- There is asbestos on pipe fittings and floor tiles which is being managed safely by trained staff.
- The gym is undersized by 161 square meters compared to ECCD planning guidelines.



Capital Investments

School Year	Scope of Work	Scope of Work Cost
2011-2012	Boiler	\$ 5,400.00
2011-2012	Exterior Doors	\$ 29,900.00
2017-2018	Site Improvement	\$ 40,000.00
Total		\$ 75,300.00



*Excited. Involved.
Prepared.*

Physical Plant Status

School Physical Plant Review / Report by School

School: Florenceville Elementary School (ASD-W)		Grades: Kindergarten, 1-5		Year Built: 1966		
ASD-W	School No: 3009	City/Village: Florenceville-Bristol	Enrolment:239	Total Area (m2): 1847		
Mechanical and Electrical Systems			Description	Priority	Est. Cost	
Heating and Ventilation		Ventilation System	Ventilation System. Note: Estimated costs updated Sept'13.	2	\$455,000.00	
Heating and Ventilation		Heating System	Boiler Replacement. Oil tank replacement. DTI investigating cost.	1	\$100,000.00	
Electrical		Communication Systems	To replace entire PA system including head, wiring, speakers .	1	\$40,000.00	
Electrical		Security Systems	Installation on intrusion alarm system.	1	\$14,000.00	
				Sub Total (Category)	\$609,000.00	
Building Interior and Additions			Description	Priority	Est. Cost	
Interior Alterations and Renovations		Washrooms	Washroom upgrade including fixtures and stalls. Note: Estimated costs updated Sept'13.	2	\$160,000.00	
				Sub Total (Category)	\$160,000.00	
Fire Codes			Description	Priority	Est. Cost	
Fire Prevention		Sprinkler System	sprinkler system installation with reservoir	1	\$286,809.00	
				Sub Total (Category)	\$286,809.00	
					SCHOOL TOTAL	\$1,055,809.00



Facilities Operational Costs

Actual Costs			
	Fiscal Year	Fiscal Year	Fiscal Year
	2016/17	2017/18	2018/19
Facilities Costs			
Electricity	\$15,055	\$15,598	\$19,600
Water/Sewage	6,664	6,664	6,664
Garbage Removal	4,178	4,178	4,178
Snow Plowing	5,250	5,250	5,250
Heating Fuel	14,754	16,994	19,692
Cleaning Supplies/Services	3,117	8,236	4,045
Minor Repairs/Renovations	17,345	31,361	22,917
Total	\$66,363	\$88,281	\$82,346



*Excited. Involved.
Prepared.*

Assigned Budgets

	Actual Costs
Cost Centers	Fiscal Year
	2018-2019
Assigned Budgets	
Regular Instruction	17,594
Administrative Support	4,534
Teachers Working Conditions	2,722
Nutrition	2,077
Bilingual Learning Environment	400
Wellness Grant	1,832
Co/Extra Trips	954
PSSC	699
Total	30,812



*Excited. Involved.
Prepared.*

Florenceville Elementary School Salaries

	Actual Costs	Projected Costs
Cost Centers	Fiscal Year 2018-2019	Fiscal Year 2019-2020

Salaries		
Administration	18,746	18,735
Teacher	1,317,701	1,459,034
Administrative Assistant	41,000	41,750
Library Assistant	6,315	6,380
Custodians	55,082	66,845
Student Attendant		4,596
Educational Assistant	132,202	125,231
Total	1,571,046	1,722,571



*Excited. Involved.
Prepared.*

Total Costs

	Actual Costs
Cost Centers	Fiscal Year
	2018-2019
TOTAL COSTS	1,684,204



*Excited. Involved.
Prepared.*

Transportation Study

Florenceville Elementary School

- Students in Grades 6-12 who reside in the Florenceville Elementary School catchment area are bused to Florenceville Middle School and Carleton North High School. Florenceville Elementary School has French Immersion available.
- The morning school bus system has 26 buses transporting students within the Florenceville Elementary School catchment area into the Florenceville Elementary School.
- The afternoon school bus system has 26 buses transporting students within the Florenceville Elementary School catchment area from the Florenceville Elementary School.
- There would not be any anticipated impact with regards to the number of school buses or drivers if Florenceville Elementary School should close.



Transportation Study

Florenceville Elementary School - Busing

School	Longest Ride In	Longest Ride Out	Earliest Pick-up	Latest Drop Off	Average Ride Time
Florenceville Elementary School	80 MIN	80 MIN	7:06 AM	3:34PM	38 minutes



*Excited. Involved.
Prepared.*

Transportation Study

Florenceville Elementary School - Busing

	Distance to Florenceville Elementary School
Average Distance	10.2 km
Maximum Distance	46 km
Minimum Distance	0.9 km



*Excited. Involved.
Prepared.*

Impact on the Local Community and Economic Development

- Florenceville Elementary School is 1 of 2 schools in the community. There is strong parent and community support for Florenceville Elementary School.
- The impact on economic development and the local community related to the movement of Florenceville Elementary School students to a new school is unknown by school officials at this time. We welcome community stakeholders to contribute to the discussion under this topic during public meeting #2.



Possible Considerations Including Impact on Other Schools

- Maintain the status-quo at Florenceville Elementary School
- Provide for repairs to Florenceville Elementary School
- Close Florenceville Elementary School and include students in a new K – 8 school with location and catchment areas to be determined during the Major Capital Process.



Our Vision for New School

A typical K-8 school for 650 students would look something like this:

- **32 general instruction classrooms**
- **4 Kindergarten classrooms**
- **1 early childhood development room**
- **(2) multi-function classrooms**
- **MSTE spaces**
- **science room**
- **resource/special care classrooms**
- **student/project work areas**
- **music rooms**
- **art room**
- **performing arts/theatre classroom**



*Excited. Involved.
Prepared.*

Our Vision for New School

- (2) 591 m² gymnasiums with change rooms and ancillary spaces
- guidance/visiting professionals' offices
- student government room
- library/media centre
- cafeteria/kitchen/stage
- recycling room
- administration space
- personnel centre with staff lounge
- play areas and playfield



*Excited. Involved.
Prepared.*

Questions and Answers

- Our presenters are ready to take questions from the floor.



*Excited. Involved.
Prepared.*

What Happens Next

- Public Meeting #2 – January 18, 2019 at 1:00 p.m. at this school.
- Public Meeting #3 – March 19, 2020 at 6:30 p.m. at Carleton North High School
- DEC makes a recommendation on school's future
- Government considers the recommendation and makes a decision.
- Visit our website for further details and information on sustainability studies at www.asd-w.nbed.nb.ca



*Excited. Involved.
Prepared.*