



Bristol Elementary School

PO Box 826, 9208 Main Street, Florenceville-Bristol, NB E7L 2A9

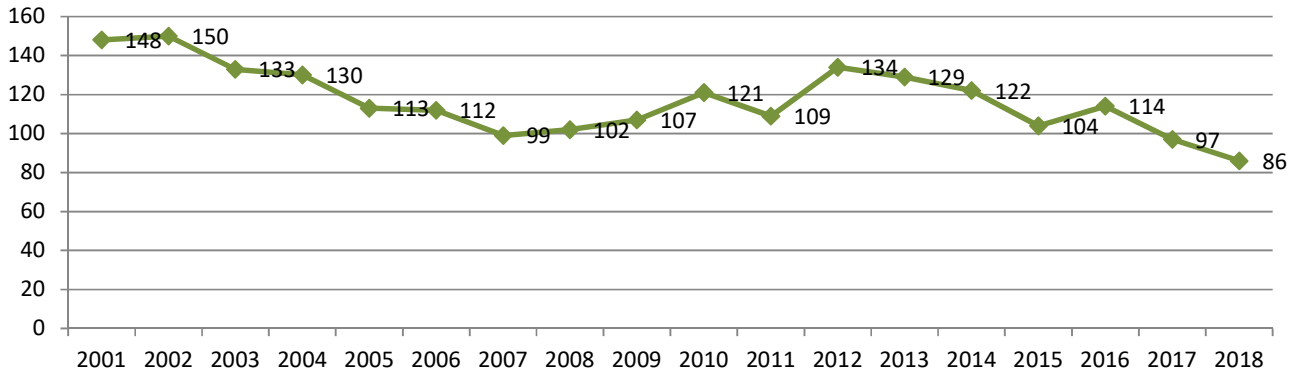
Phone: (506) 392-5124 Fax: (506) 392-5128

Grades: K-5

Built: 1966

Functional Capacity Data	Student Enrollment	Number of Classrooms	Classrooms In Use	School Capacity	Capacity Rating
based on 24 students per class	86	8	7	192	44.8%

School Enrollment Trends 2001 to Present



Physical Description:

- Built in 1966.
- Electrical entrance is 400 amps, 230 volt and in good condition. There is capacity available for more circuits.
- Exterior lighting is quartz.
- Interior lighting is fluorescent in good condition; lenses are in poor condition.
- Hot water heating system-- Weil-McLain boiler in good condition.
- There are no ventilation units.
- Heating is controlled by thermostats in the school.
- Air quality is good.
- Washrooms are fair. Mostly old fixtures with some new flushes.
- Windows are in good condition.
- Exterior doors are in good condition.
- There is no cafeteria.
- Floors are tile and in good condition.
- Ceilings in the hallways are sheetrock. Classrooms have cedar wood ceilings
- Painting is done according to a summer schedule.
- Interior doors are wood; some are fire rated.
- Stairways are enclosed to meet fire separation requirements complete with fire rated doors, frames.
- Gymnasium floor is made of tile in good condition. Square footage is 2387 square feet.
- There is no wheel chair access. There is no lift or elevator.
- There is proper access to the roof.
- Corridor walls are sheetrock.
- Parking is adequate that is paved and in fair condition. Some potholes.
- Water supply is a well with an ultra-violet system and backflow prevention.
- Roof does not leak.
- Land ownership around the school is residential.
- There is room to expand and the neighborhood is appropriate to maintain a school facility for years to come.
- The school is 1427 square meters.
- There are no known environmental concerns.



Bristol Elementary School

PO Box 826, 9208 Main Street, Florenceville-Bristol, NB E7L 2A9

Phone: (506) 392-5124 Fax: (506) 392-5128

Grades: K-5

Built: 1966

Operational Costs

Electricity	\$	7,237.43
Water/Sewage	\$	3,861.36
Garbage Removal	\$	2,460.96
Snow Plowing	\$	4,000.02
Heating Fuel	\$	13,409.01
Natural Gas	\$	-
Cleaning Supplies/Services	\$	3,792.44
Minor Repairs/Renovations	\$	11,313.99
Total	\$	46,075.21

Operational Costs Per Square Meter \$ 32.29
Based on: 1427 Sq Meters

Operational Costs Per Student \$ 404.17
Based on: 86 Enrollment



Bristol Elementary School

PO Box 826, 9208 Main Street, Florenceville-Bristol, NB E7L 2A9

Phone: (506) 392-5124 Fax: (506) 392-5128

Grades: K-5

Built: 1966

Feeder Schools

Students enrolled in the English Prime program at Bristol Elementary School move to Florenceville Middle School for grades 6-8. Students enrolled in French Immersion for grade 3 move to Florenceville Elementary School.

Catchment Area Boundaries

North to #9450 Route 105; West to the Saint John river; East to #290 Lockard Mill Road and #7800 Route 107; South to #9280 Route 105, #1360 Route 570, #770 East Coldstream Road, #746 Route 580 and #860 Knowlesville Road.



Bristol Elementary School

PO Box 826, 9208 Main Street, Florenceville-Bristol, NB E7L 2A9

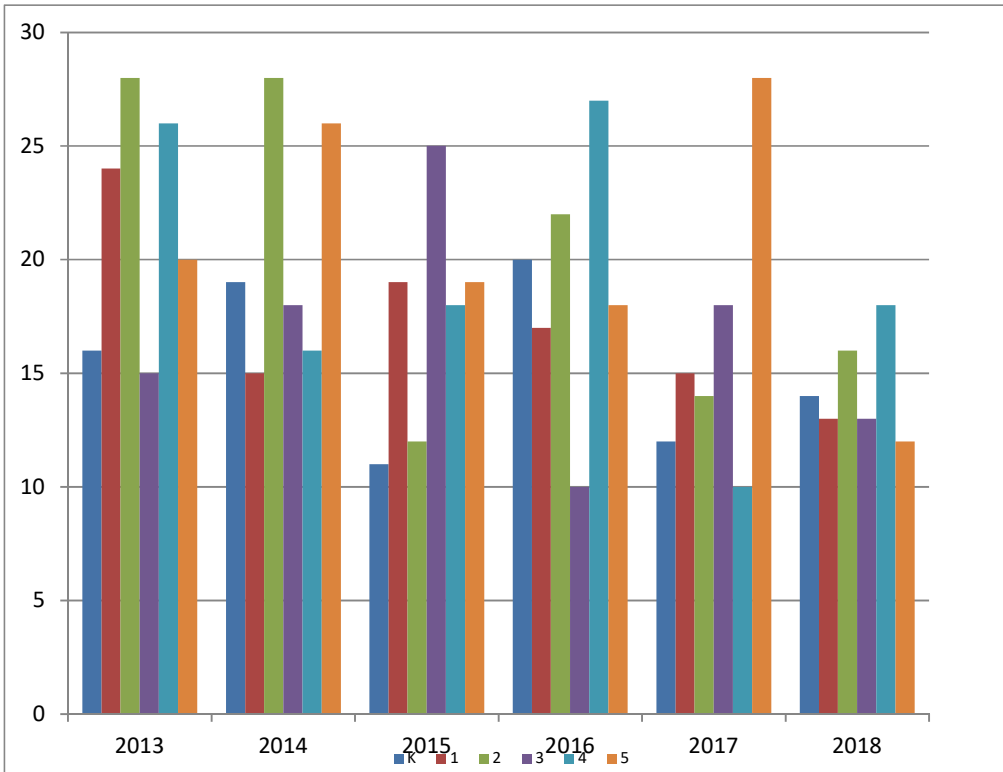
Phone: (506) 392-5124 Fax: (506) 392-5128

Grades: K-5

Built: 1966

Enrollment 2013-2018

	2013	2014	2015	2016	2017	2018
K	16	19	11	20	12	14
1	24	15	19	17	15	13
2	28	28	12	22	14	16
3	15	18	25	10	18	13
4	26	16	18	27	10	18
5	20	26	19	18	28	12
Total	129	122	104	114	97	86





Bristol Elementary School

PO Box 826, 9208 Main Street, Florenceville-Bristol, NB E7L 2A9

Phone: (506) 392-5124 Fax: (506) 392-5128

Grades: K-5

Built: 1966

Major Capital and Capital Improvements Projects 2010-2019

School Year	Project	Capital Improvements	Major Capital
2010-2011	Masonry - Brick Repointing	\$ 4,300	
2011-2012	Radon	\$ 30,649	
2018-2019	Roof Replacement	\$ 70,000	
Totals		\$ 104,949	\$ -