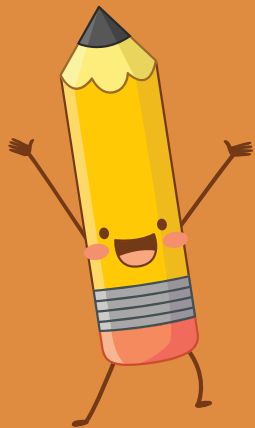


Assiniboine Avenue Elementary

Welcome

September 1, 2021



Honouring the Land

- I would like to respectfully acknowledge that the land on which the school is located is the traditional unceded and unsurrendered territory of the Wolastoqiyik peoples.
- We have students from Welamukotuk First Nation as part of our school community.

Welcome Families!

Our Mission:

To provide a collaborative, compassionate and inclusive community where all individuals are valued and respected to ensure they reach their fullest potential.

Our Vision:

To provide an environment where all individuals are provided the means to succeed.



School Composition



- 260 Students (enrollment continues to be fluid with postings in the area)
- 14 Homeroom classes
- 18 Teachers
- 11 Educational Assistants
- Administrative Assistant – Mrs. Jennifer Howe
- Principal – Mrs. Lori Jones Clark
- Vice Principal – Mrs. Susan Moore
- Librarian – Mrs. Story (really ... that is her name)
- 2 First Nation Enhancement staff – Mrs. Corey and Mrs. Coy

COVID Protocols

- We had hoped that our return to fall 2021 would have fewer restrictions due to COVID. As you are aware the EECD has a created a document called **Heathy and Safe Schools. [Healthy and Safe School Guidelines document](#). This document provides the guidelines for school operations.**

- We are committed to having a year of joyful learning. Students have shown that they are flexible and compliant to the health and safety requirements. We are excited to return and welcome students back into the building.

Assiniboine Avenue Operational Plan Summary 2021-22

Meet the Teacher

- We are unable to have a traditional, face-to-face Meet the Teacher. You will receive a Welcome PowerPoint from your child's teacher Wednesday Sept. 1. *** Please note that student enrollment is fluid at this point and class changes may occur until the end of September.

Building Access

- Students will enter the building at designated doors upon arrival in the morning.
- Parents and caregivers will only enter the school by appointment. Visitors who have permission to enter the school will be required to wear a mask.
- Passive screening upon entry will be expected.
- When picking up students, parents/caregiver will inform the homeroom teacher and office in advance.
- Upon arrival, driver is to park and call the school or wait outside the main doors. An adult from the office will walk the student to the main entrance and record who picked up the child.
- Students arriving later than 8:20am will enter through the main doors. The Administrative Assistant will record the time of arrival and the reason for tardiness.
- At dismissal, teachers and support staff will walk their students to parent pick up or busses. Students and staff will wear masks.
- Visiting teachers/professionals (SLP, APSEA) who work with students will keep a log where they have been, use hand sanitizer and plastic barriers or a mask where possible.
- A visitor log will be maintained by the Administrative Assistant, as well as log of staff attendance and substitutes teachers in the building.

Illness

- Students who develop two or more COVID symptoms while at school will be asked to put on their mask and wait in an isolated area for pick up within an hour. The area will be sanitized once the student leaves. Parents will be advised to schedule a COVID test.

- When the student is symptom free, the student can return to school and/or follow the direction of Public Health.
- Students and staff with two or more symptoms or who are feeling sick, stay home.
- Students or staff with one symptom will wear a mask.

Hygiene Practices

- Hand sanitizing stations will be available in each classroom and school entrance.
- Classroom windows will be opened regularly. Teachers will engage students in outdoor learning frequently.
- Teachers will teach and monitor good respiratory hygiene etiquette and handwashing with students. It will be done daily for the first two weeks of school and reviewed regularly thereafter.
- Students will sanitize their hands upon entry and exit of the library, and gymnasium.
- Directional signs and visual cues will be posted in hallways and at washrooms.

Masks

- Students will wear masks when in common areas i.e., washroom, hallways, busses, entering/exiting the building. Students will require two masks.
- Students will be taught by parents and teachers to follow good hygiene practices.
- No masks will be required outside.

Screening

- Staff and families are expected to self-screen daily.
- The school will follow EECD outbreak management plan.

Mental Health Support

- A percentage of each student's week will be spent on social, emotional, and physical health.

Staggered Entry

- Students' first day is either Tuesday, Wednesday OR Thursday (Sept 6-8).
- Your child's teacher will be contacting you to discuss the staggered entry and sending you a PowerPoint.
- All students will come back on Friday for a half day – dismissal at 12:00.

You will receive a "Meet the Teacher" PowerPoint on Sept. 1. You will also be contacted about the staggered entry day for your child. If you have not been contacted by Friday, please call the school 357-4069

Daily Schedule

7:40-8:25 – Busses arrive *

8:00- 8:20 – Parent drop off at doors by the parent parking lot *

8:25 – Announcements

8:30 – Classes begin

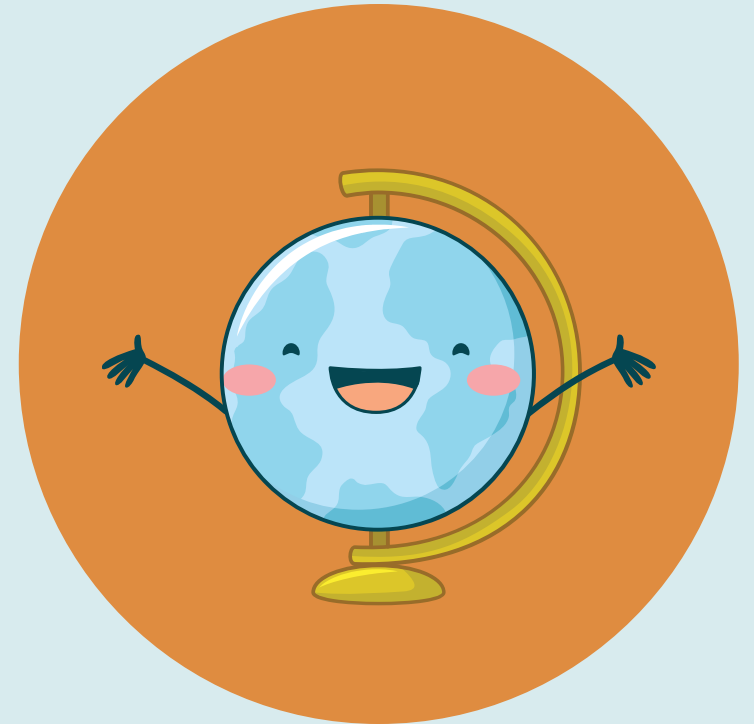
10:00-10:15 – Recess

10:15-10:30 – Snack

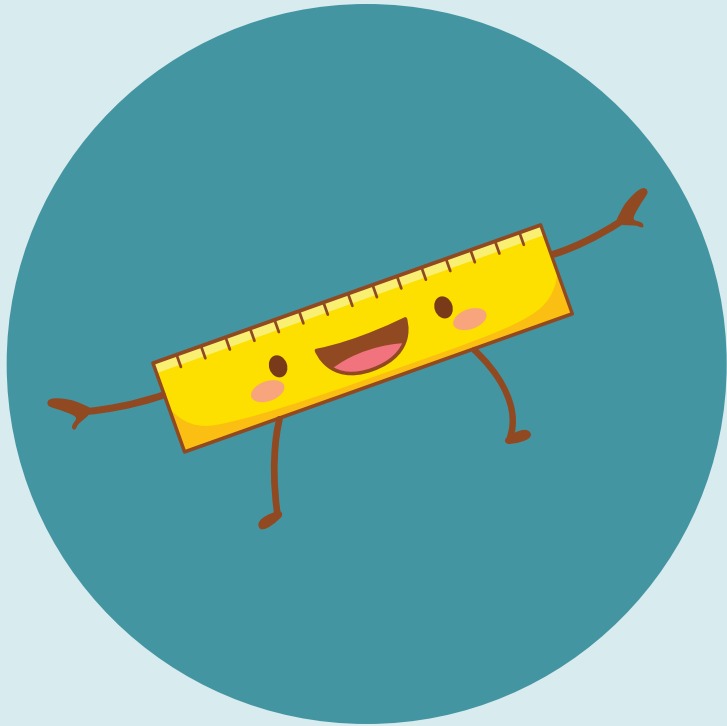
12:00-1:00- Lunch and Recess

2:00 – M-Th Dismissal (Friday – 12:00)

* Students will come directly into the school.



New Heat Guidelines



We have been informed that if the forecast indicates the temperature is **36 degree plus with the humidex**, schools will move to at home learning. Mr. McTimoney is required to make that decision at 6:00 am and not the night before.

The school will send home learning packages early in the year that would be used in the event students are learning from home due to heat or Covid closure. Teacher may also send additional learning suggestions and websites for students to explore depending on the length of the closure.

Be kind.

Have patience.

Give grace.

Parent Parking Lot

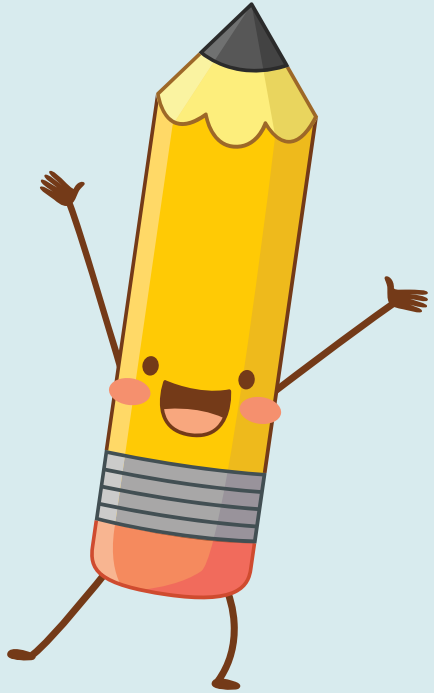
- The parent parking lot is a busy spot, and it is only made worse during the winter months. Have patience. We all share the responsibility of keeping the students safe.
- Entrance into the school will be at the end door closest to the parking lots between 8:00-8:20.
- Please park and walk your child safely through the parking lot. Staff will be there to greet you and your child.
- If you arrive after 8:20 please walk your child to the main entrance.
- Students who are being picked up at the end of the day will be dismissed at the same location by staff. Students will be lined up and dismissed one at a time once staff have made visual contact with you.
- End of day dismissal is 2:00 M-Th and 12:00 on Friday.

Parent Volunteers

- Parent volunteers play an important role in our school. We need volunteers to run our many programs (hot lunch, breakfast program, milk program, fundraising).
- Please reach out to our Parent Volunteer Coordinator Lisa Dormer lisadormer2@gmail.com

PSSC

- The PSSC works with the principal to advise and monitor the School Plan and student achievement.
- We meet a minimum of 5 times a year in the evening.
- We are currently looking for 3-6 new members.
- Email lori.jones-clark@nbed.nb.ca if you are interested or would like more information.



We looking forward to a wonderful year ahead with amazing students!

Assiniboine Avenue Elementary is a joyful place to learn and grow!

Please follow us on:

Facebook: Assiniboine Avenue Elementary

Twitter @Assiniboinekids