

Information Bulletin for Parents and Guardians Grade 10 Provincial Assessment

The Grade 10 assessment is part of New Brunswick's Provincial Assessment Program. The assessment will be completed between May 10 and May 26, 2021. Information from this assessment is used to track progress in education programs over time.

What subject is included in the Grade 10 assessment this year?

French second language reading is assessed this year (Post Intensive French OR French Immersion).



Each assessment also includes a short student survey about literacy.

To reduce pressures on students due to the pandemic, the science and mathematics components of the assessment will not be included this year.

Students are given 60-120 minutes to complete the assessment. This year, the assessment will be made up of multiple-choice questions only.

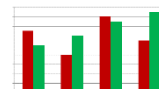
How is the assessment completed and scored?

Students record their answers to the multiple-choice questions on bubble sheets and these are scanned.



What results are available from the Grade 10 assessment?

Results are reported by school, district, and province and are used to inform decisions at all three levels. Results will be reported in the fall of 2021. Individual student results are not part of the reporting for this assessment.



Do all Grade 10 students take part in the assessment?

This assessment is intended to be as inclusive as possible. Barring exceptional circumstances, all Grade 10 students participate except those whose Personalized Learning Plan indicates they should be exempted. A variety of accommodations for this assessment are available to all students. In addition, specialized accommodations are approved to assist students with specific needs.

