

COVID-19 OPERATIONAL PLAN FOR SCHOOLS

To ensure each school environment safely applies risk mitigation measures consistent with Public Health guidance and the *Occupational Health and Safety Act* and Regulations. All schools, and district offices, must develop a written COVID-19 Operational Plan to provide the safe environment needed for students and staff. Refer to the *Return to School*, September 2020 document and its appendices for primary support for the requirements listed below. This completed document shall be submitted to Clare Tooley, clare.tooley@nbed.nb.ca for review by **August 26th, 2020**. It will then be signed off by Zoë Watson or John MacDonald and returned to the principal for implementation and distribution.

The following document is intended to provide a check list with spaces for each main topic area along with resources. This will help the plan owner, (school Principal), outline each school's Operational Plan. Communication plans must consider and include staff, students, parents/guardians, visiting community professionals, and public. The District Occupational Health and Safety Coordinator is expected to be the primary support for staff and students. School Joint Health and Safety Committees (JHSCs) should be considered integral to preparations and support for September operations and beyond.

| | |
|---|--|
| School Name | Grand Manan Community School & White Head Elementary |
| Principal (Signature) | |
| School District Official (Signature) | |
| Plan Implementation Date | September 2020 |

From October to May, minimum monthly review is required. Principal will sign below to identify when this plan has been reviewed internally (*by the principal or JHSC*) to assess any new risks or changes to regulatory guidelines; and as increased hazards/risk conditions warrant. **Keep this original first page for a record of reviews as the rest of the document may change.**

| | | | |
|---------------------------------|---------------|---------------------------------|---------------|
| _____ Name (October Review) | _____ Date | _____ Name (February Review) | _____ Date |
| _____ Name (November Review) | _____ Date | _____ Name (March Review) | _____ Date |
| _____ Name (December Review) | _____ Date | _____ Name (April Review) | _____ Date |
| _____ Name (January Review) | _____ Date | _____ Name (May Review) | _____ Date |

COVID-19 OPERATIONAL PLAN FOR SCHOOLS

Utilize this page to track your changes.

| Section(s) Updated - <i>(List the section numbers only)</i> | Date Updated |
|---|------------------|
| All Sections | August 26, 2020 |
| All | October 15, 2020 |
| All | November 9, 2020 |
| All | December 7, 2020 |
| All | January 8, 2021 |
| | |
| | |
| | |
| | |
| | |
| | |
| | |
| | |
| | |
| | |
| | |
| | |

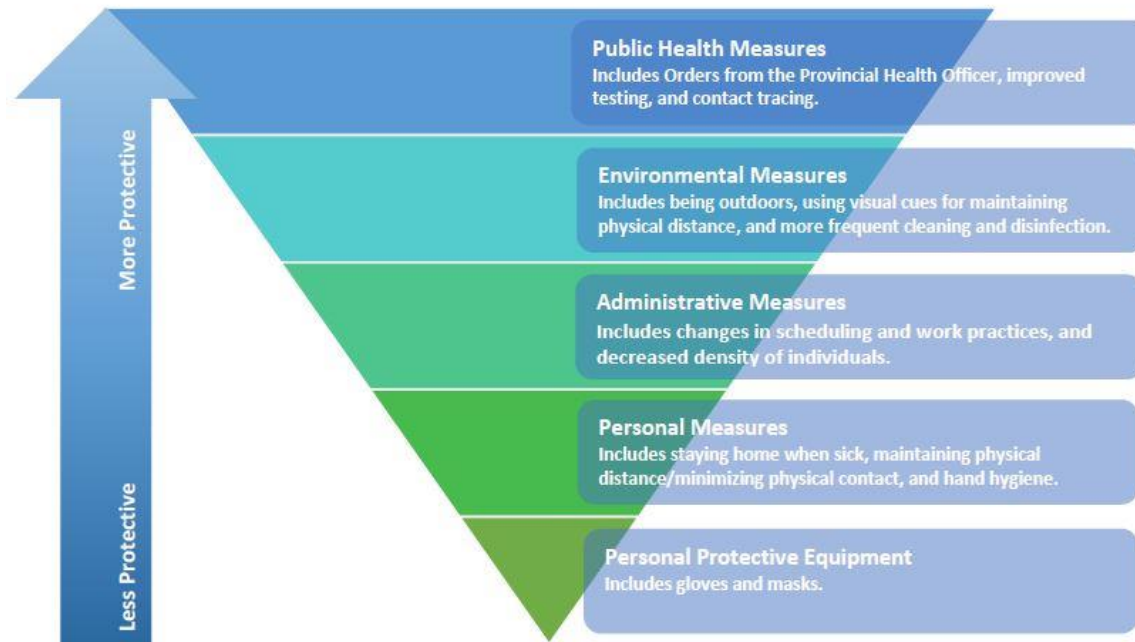
Table of Contents – Document Owner will need to update page numbers as required

| | | |
|---|--|---------|
| Section 1 - RATIONALE – Effective Risk Mitigation – Infection and Prevention Controls | Hold “Ctrl” and Click Here | Page 4 |
| Section 2 - Communications | Hold “Ctrl” and Click Here | Page 5 |
| Section 3 - Risk Assessment | Hold “Ctrl” and Click Here | Page 6 |
| Section 4 - Building Access | Hold “Ctrl” and Click Here | Page 7 |
| Section 5 - Screening | Hold “Ctrl” and Click Here | Page 8 |
| Section 6 - Physical Distancing | Hold “Ctrl” and Click Here | Page 9 |
| Section 7 - Transition Times | Hold “Ctrl” and Click Here | Page 12 |
| Section 8 - Cleaning and Disinfection Procedures | Hold “Ctrl” and Click Here | Page 12 |
| Section 9 - Hand Hygiene and Cough / Sneeze Etiquette | Hold “Ctrl” and Click Here | Page 15 |
| Section 10 - Personal Protective Equipment | Hold “Ctrl” and Click Here | Page 17 |
| Section 11 - Occupational Health and Safety Act and Regulation Requirements | Hold “Ctrl” and Click Here | Page 20 |
| Section 12 - Outbreak Management Plan | Hold “Ctrl” and Click Here | Page 22 |
| Section 13 - Mental Health | Hold “Ctrl” and Click Here | Page 23 |
| Section 14 - Additional Considerations | Hold “Ctrl” and Click Here | Page 24 |

COVID-19 OPERATIONAL PLAN FOR SCHOOLS

Section 1 - RATIONALE – Effective Risk Mitigation – Infection and Prevention Controls

The best prevention controls in a school/district are achieved by first focusing on recommended physical distancing requirements and taking every reasonable step to configure the physical site to apply an appropriate physical distance between people. All must practice appropriate hand hygiene and cough / sneeze etiquette. Once all reasonable options in a category have been exhausted, move to the next category. Refer to table below for clarification.



Source: <https://www2.gov.bc.ca/assets/gov/health/about-bc-s-health-care-system/office-of-the-provincial-health-officer/covid-19/covid-19-pho-guidance-k-12-schools.pdf>

In addition to the guidelines and regulations, everyone in the school is responsible for ensuring their own safety and the safety of all others.

Visible signage with clear messaging is a key component to effective communication in the prevention and control of COVID-19.

The K-12 “Return to School September 2020” document is the comprehensive and first reference point for this document.

COVID-19 OPERATIONAL PLAN FOR SCHOOLS

Instructions: Go down the list one-by-one, review the resource materials as applicable. Describe in “Notes” box how you plan to implement the specific items at your school. To help you remember, under the “Status” column, you can select if the section is *done, in progress, not started, or not applicable*. The last column shows the “Date Implemented” so you can track when items are completed.

| Action Items | Resources <i>(Examples, Templates, Guidance Documents, Posters, Links, Reference Documents)</i> | Status <i>(Done, In Progress, Not Started, N/A)</i> | Date Implemented |
|--|--|--|---------------------|
| Section 2 - COMMUNICATIONS | | | |
| Communicate operational strategies, provide orientation to staff and students. | Refer to Orientation Document for <u>Staff and Students</u> <i>(Will be send out at a later date)</i> | Done | 9/3/2020 |
| Communicate operational strategies, provided orientation to visitors. | Refer to Visitor Guidelines | In Progress | Ongoing |
| Communicate operational strategies to parent/caregiver and school community. | District Communications Refer to Guide for Parents and the Public | Done | 8/3/2020 |

Communication Notes: *Describe how expectations are being communicated to the various stakeholders.*

-Communication of operational plan, strategies, and orientation for staff is completed August 31, 2020 for teachers, and September 3, 2020 for EA’s, support staff, and library workers. Students will receive orientation by their homeroom teacher on the first day of their return.

-“Visitor Guidelines” are posted at Reception for all visitors to review. Visitors will be even more limited during Orange phase

-District and department communication via email has been sent to parents/caregivers around the return to school document. Any changes that will apply to the students will be communicated to parents and the Operational Plan for our school will be made available on the school website

COVID-19 OPERATIONAL PLAN FOR SCHOOLS

| Action Items | Resources <i>(Examples, Templates, Guidance Documents, Posters, Links, Reference Documents)</i> | Status <i>(Done, In Progress, Not Started, N/A)</i> | Date Implemented |
|--|--|--|---------------------|
| Section 3 - RISK ASSESSMENT | | | |
| Complete a risk assessment within the school to determine the risks and identify various controls necessary to mitigate the risk of COVID-19 exposure. | Link to Risk Assessment Document | Done | 8/20/2020 |

Risk Assessment Notes: *Describe that the Risk Assessment has been completed, include a link to it if possible.*

Our school has completed the above-mentioned risk assessment at GMCS and WHES. Known risks have been assessed and we have implemented controls to minimize the risk as described in this Operational Plan. We will adjust this plan as necessary to ensure the risk to all stakeholders remains as low as possible.

COVID-19 OPERATIONAL PLAN FOR SCHOOLS

| Action Items | Resources <i>(Examples, Templates, Guidance Documents, Posters, Links, Reference Documents)</i> | Status <i>(Done, In Progress, Not Started, N/A)</i> | Date Implemented |
|--|---|--|-------------------|
| Section 4 - BUILDING ACCESS | | | |
| Ensure controls are in place to prevent the public from freely accessing the operational school. | Refer to Return to School 2020 Document Pg. 9 Refer to Poster | Done | 8/24/2020 |
| <p>Ensure controls are in place to track all people entering the school. Logs must be made available to Public Health for contact tracing purposes if it is identified that a person who tested positive for COVID-19 was present in the school.</p> <p>Attendance is required on a daily basis for staff and students.</p> <p>Schools must track all staff and students leaving the building for extended periods of time for contact tracing purposes.</p> <p>Teachers/Staff who visit multiple schools must keep a log of schools they have been to. Ex: SLP, EAL</p> | <p>Use a visitor log - See sample visitor log.</p> <p>Refer to Administrative Assistant 1-Pager</p> | Done | 8/24/2020 |
| Ensure controls are in place to track internal sports team participants. Schools must also keep a list of what other schools/organizations sports teams were at their school. | Refer to Return to School 2020 Document – Appendix F | Done | 11/25/2020 |
| <p>Ensure procedures are in place to promote and control physical distancing during the school start and dismissal times.</p> <p><i>*Keep in mind children walking, parent drop off, buses, etc.</i> <i>*Entry only doors/exit only doors, or assigned doors for certain classrooms, or specific pickup/drop off doors.</i></p> | Refer to Return to School 2020 Document Pg. 5 | Done | 9/4/2020 |

COVID-19 OPERATIONAL PLAN FOR SCHOOLS

Building Access Notes: *Describe how access to the school is being controlled and communicated. All usual security measures must be maintained.*

School access will be limited and those needing to enter are encouraged to book an appointment if possible. People dropping items off at the school will “buzz” into reception via the main entrance and reception will go to the door and retrieve the item. All doors will remain locked from the outside during the day (excluding arrival, dismissal, and breaktimes) requiring each visitor arriving to stop and buzz in. Ringing the buzzer will remain standard practice at White Head Elementary.

Signage is posted at main entrance notifying visitors that they must wear a mask. If a visitor is permitted to enter the school, they will go straight to reception, review the visitor guidelines, and sign in using the districts standard sign in sheet. Each visitor will then be escorted to their destination, unless they are a “regular” and are familiar with the school’s protocols. Each visitor must also sign out upon leaving the school.

We will take student and staff attendance on a daily basis, any time a student or staff leaves for an extended period of time for any reason they must sign out at reception.

Pick-up and drop off for students in K-2 will take place at the West door at the elementary wing after busses have departed.

Pick up and drop off for students in 3-12 will take place at the South/main entrance. Physical Distancing must be maintained when entering/exiting the school.

Pick up and drop off for White Head Elementary will take place at the main door of the building.

| Action Items | Resources <i>(Examples, Templates, Guidance Documents, Posters, Links, Reference Documents)</i> | Status <i>(Done, In Progress, Not Started, N/A)</i> | Date Implemented |
|--|--|--|------------------------|
| Section 5 - SCREENING | | | |
| <p>Ensure that all staff entering the building understands and implements the screening process.</p> <p>Staff must screen themselves, take their temperatures, before leaving residences. If there are symptoms of COVID, they should not be at school.</p> <p>Students of age can screen themselves or have a parent screen them daily before coming to school.</p> | <p>Refer to Screening Tool</p> <p>Refer to Return to School 2020 Document Pg. 9, 10</p> | <p>Done</p> | <p>9/3/2020</p> |

COVID-19 OPERATIONAL PLAN FOR SCHOOLS

| | | | |
|---|---|--------------------|-------------------------|
| <p>Create a self-isolation space. Isolate people that are symptomatic immediately at the facility. Keep the person isolated, and wearing a mask (<i>medical preferred</i>), to avoid contaminating others until they are picked up. Call 811 or your health care provider as required and comply with the instructions given.</p> <p><i>Where possible, anyone providing care to a symptomatic individual should maintain a distance of 2 metres and wear a medical mask.</i></p> | <p>Refer to Return to School 2020 Document – Appendix K</p> | <p>Done</p> | <p>8/20/2020</p> |
|---|---|--------------------|-------------------------|

Screening Notes: *Outline how screening requirements are being met.*

GNB Screening Poster will be posted on ALL entrances.

***"Symptomatic" means exhibiting 2 or more symptoms of Covid-19**

Staff have been advised of screening requirements during Orientation. Staff must self-monitor throughout the day and are aware that should they become symptomatic, they must put on a mask, and go home as soon as possible.

Students are also required to self-screen prior to entering the school and self-monitor throughout the day. Younger students will be screened by a parent prior to coming to school. If a student becomes symptomatic while at school they must put on a mask (we will provide a medical mask), and either leave the building or await the pickup of a parent while waiting in our isolation area in room 32 next to the office (maximum 1-hour). The isolation area must be cleaned between each use following procedure within the Standard Cleaning & Disinfection Document.

***Note that mask usage will take place at all times under Orange except during physical education, sitting and working quietly (K-8), or while drinking/eating.**

| Action Items | Resources <i>(Examples, Templates, Guidance Documents, Posters, Links, Reference Documents)</i> | Status <i>(Done, In Progress, Not Started, N/A)</i> | Date Implemented |
|--------------|--|--|------------------|
|--------------|--|--|------------------|

COVID-19 OPERATIONAL PLAN FOR SCHOOLS

| Section 6 - PHYSICAL DISTANCING | | | |
|--|--|--------------------|-------------------------|
| <p>Implement physical distancing protocols.</p> <ul style="list-style-type: none"> → Classroom, lunchroom, elevators (<i>indicate where to stand within elevator if enough space, mask use, number of persons permitted</i>), staff rooms, locker rooms, workout rooms, coat/boot areas, meeting rooms, washrooms, change rooms, cafeteria, lockers (<i>recommend not to use lockers as much as possible</i>), etc. → Consider staff, students, visiting professionals, parents/guardians, contractors, volunteers, emergency personnel, repair workers, and community members. → Arrange furniture to promote physical distancing requirements (<i>including reception area</i>). Remove furniture if possible. → Provide visual cues on floor, indicate directional movement where appropriate, “no stopping” areas, narrow hallways, arrows, etc. → Determine if installation of physical barriers, such as partitions, is feasible. | <p>Refer to Return to School 2020 Document <i>various sections</i>.</p> <p>Itinerant professional information in Return to School 2020 Document pg. 18</p> <p>Refer to Chartwells Operational Plan</p> | <p>Done</p> | <p>8/19/2020</p> |
| <p>Plan all assemblies or other school-wide events <i>virtually or outdoors</i>.</p> | <p>Refer to Return to School 2020 Document Pg. 4</p> | <p>Done</p> | <p>8/20/2020</p> |
| <p>Evaluate options to reduce the number of people required onsite.</p> | | <p>Done</p> | <p>8/20/2020</p> |
| <p>Evaluate the risk of individuals coming closer than two metres. Stairwells, entry and exit points and narrow hallways can present challenges. Consider implementing one-way traffic zones where possible, e.g., one stairwell for walking up, a different one for walking down.</p> | <p>Refer to sample signage</p> | <p>Done</p> | <p>8/19/2020</p> |

COVID-19 OPERATIONAL PLAN FOR SCHOOLS

| | | | |
|--|-------------------------------|--------------------|-------------------------------|
| <p>Perform Evacuation Drills (<i>Fire Drill/Lockdown</i>) as normal as per NB Reg 97-150 School Administration Regulation. *Physical distancing requirements will be lifted during time of evacuation only, provided that it is complete, and students are back to physical distancing or being within their appropriate bubble within a 15-minute timeframe. Physical distancing must be adhered to upon re-entry to the school and masks are encouraged for all staff and students during drills.</p> | NB Reg 97-150 | In Progress | 10/19/2020 |
| <p>School layout guide maps to inform students, staff, visitors, and public of school layout (<i>directional flow, assigned entrance/exit doors</i>) are encouraged but not mandatory.</p> | District Facilities (Maps) | N/A | Click or tap to enter a date. |

Physical Distancing Notes: *Outline how physical distancing is being supported and communicated.*

Classrooms – Have been laid out to allow for as close to 2M Distancing as possible between desks. Extra furniture has been removed from classrooms. Library, Guidance Room, etc. Have all been modified to allow proper physical distancing and extra furniture has been removed.

Lunchroom – K-8 students are eating in their classrooms. Enough tables have remained to allow high schools students that utilize the room to physical distance. Lunch practices at White Head Elementary will remain, with physical distancing in the classroom.

Staff Room - limit of 4 at the eating area. Chairs and couch have been arranged to provide 2M distance. Masks and physical distancing are to be maintained. Extra furniture has been removed. Signage has been posted. There is a limit of 2 people in the staff room at White Head Elementary. Signage has been posted.

Locker Rooms in gym area is limited to 8 people at a time – signage has been posted.

Lockers – Lockers will be limited to storage only; the expectation is they will not be visited frequently. Classroom changes have been made to ensure students have their lockers as close to the classroom as possible.

Washrooms – limited number of people with signage posted at doorway. Laminated signage will be cleaned regularly throughout the day. Masks must be worn in washrooms.

Hallway – Directional arrows are in place to illustrate direction of traffic and ensure physical distancing. Benches have been removed to discourage gathering while not observing physical distancing.

Meeting Room – Limited to 5 people. Signage posted. A plexiglass barrier is available in the meeting room to utilize.

Office - There is physical distance signage to remind people they cannot enter unless they have permission and where physical distancing can be maintained. Masks are worn while in the office unless it is a designated workspace.

Assemblies– will be held virtually at this time

Evacuation Drills – We will stager the locations of our Muster Points so physical distancing can be maintained when outside of the school.

COVID-19 OPERATIONAL PLAN FOR SCHOOLS

***Orange phase*- Mask usage will be at all times when in the building except when engaged in physical education, sitting and working quietly and at the teacher's discretion (K-8) or while eating/drinking**

| Action Items | Resources <i>(Examples, Templates, Guidance Documents, Posters, Links, Reference Documents)</i> | Status <i>(Done, In Progress, Not Started, N/A)</i> | Date Implemented |
|---|--|--|------------------|
| Section 7 - TRANSITION TIMES | | | |
| Modify School schedule as required to address transition times, break/recess, accessing lockers, lunch, etc., to promote physical distancing and respect student groupings. Provide time for food preparation and mealtimes. | District OHS Coordinator <i>(Guidance)</i> Refer to Return to School 2020 Document Pg. 13, 14, 15 | Done | 8/20/2020 |

Transition Times Notes: *Describe how transitioning/staggering is being implemented and maintained. Insert school schedule.*

COVID-19 OPERATIONAL PLAN FOR SCHOOLS

Changes to schedules and transition times for K-5 have taken place to ensure physical distancing can be maintained during breaks and on the playground. The middle school schedule has had a change to the lunch break to better suit classroom bubbles and limit transitions in hallways. High school students are on a two-day, rotating schedule to ensure adequate distancing in classrooms. Transitions will be assessed regularly.
Transition times at White Head Elementary remain the same.

| Action Items | Resources <i>(Examples, Templates, Guidance Documents, Posters, Links, Reference Documents)</i> | Status <i>(Done, In Progress, Not Started, N/A)</i> | Date Implemented |
|--|--|--|------------------|
| Section 8 - CLEANING AND DISINFECTION PROCEDURES | | | |
| Ensure a schedule of cleaning and disinfecting as per EECD cleaning and disinfection standards. This document includes day to day custodial operations, cleaning of toys, desks, phys. ed equipment, instruments, shared surfaces, equipment, computers, library books, art supplies, etc. | Refer to Return to School 2020 Document – Appendix G Refer to Table – Make specific for your school Refer to WHMIS Overview Document | Done | 8/26/2020 |

COVID-19 OPERATIONAL PLAN FOR SCHOOLS

| | | | |
|--|--|-------------|------------------|
| Washrooms: → Equip with running tap water, liquid soap, paper towel, (<i>forced air dryers in many locations</i>), toilet paper, and garbage containers where needed. → Foot-operated door openers may be practical in some locations. → K-12 Staff and Students - Community masks must be worn whenever physical distancing requirements outlined in the Return to School 2020 Document cannot be maintained. | Refer to Return to School 2020 Document Pg. 14 | Done | 8/14/2020 |
| Implement Bus Cleaning Protocol | Refer to Return to School 2020 Document – Appendix D | Done | 8/14/2020 |
| Implement Outbreak Cleaning & Disinfection Protocol when required (<i>Process, PPE Requirements</i>) | Refer to Return to School 2020 Document – Appendix G | Done | 8/14/2020 |
| Abide by EECD Ventilation Guidelines | Refer to Return to School 2020 Document Pg. 14 | Done | 8/20/2020 |

Cleaning and Disinfection Notes: *Describe the cleaning and disinfection procedures and how they are being managed.*

Hand cleaning posters have been posted in all washrooms.

Custodian will periodically check to ensure washrooms are adequately stocked up with soap, paper towels, etc.

Masks are required at all times except when engages in physical education, working quietly as one’s desk (K-8), or while eating/drinking.

Buses will be cleaned as per the Bus Cleaning Protocol.

K-5 students will sanitize both prior to, and upon return from outdoor play areas.

COVID-19 OPERATIONAL PLAN FOR SCHOOLS

Cleaning of equipment/frequently touched items and surfaces will be cleaned as per the Standard Cleaning & Disinfection Document.

In the event of an outbreak, we will ensure proper areas are cleaned as per Appendix K of the Return to School Document.

We will open windows whenever possible and report any issues with ventilation to our facilities team to fix.

COVID-19 OPERATIONAL PLAN FOR SCHOOLS

| Action Items | Resources <i>(Examples, Templates, Guidance Documents, Posters, Links, Reference Documents)</i> | Status <i>(Done, In Progress, Not Started, N/A)</i> | Date Implemented |
|--|---|--|------------------|
| Section 9 - HAND HYGIENE AND COUGH / SNEEZE ETIQUETTE | | | |
| <p>Ensure proper hand hygiene is practiced before and after handling objects or touching surfaces.</p> <p>Ensure hand-washing posters are posted in all washrooms. <i>Suggest putting them on doors and walls.</i></p> | <p>See Table 1</p> <p>Refer to Return to School 2020 Document Pg. 11, 12, 13</p> <p>Schools Custodial and District Facilities Management Handwashing Poster</p> | Done | 9/1/2020 |
| <p>Ensure availability of all necessary supplies for cleaning and disinfecting.</p> <p>Designate personnel responsible for monitoring supply levels and communicating with administrators when supplies are low.</p> | | Done | 8/14/2020 |
| <p>Have minimum Health Canada approved hand sanitizer available to use when soap and water is not available.</p> <p>Anyone bringing hand sanitizer to school must ensure it is *FREE OF ADDED SCENTS*</p> <p>Teachers will be in control of the hand sanitizer in classrooms.</p> | <p>Hand Sanitizer Poster</p> <p>Refer to Return to School 2020 Document Pg. 11, 12, 13</p> | Done | 9/2/2020 |
| <p>Remind everyone about frequent hand washing and cough/sneeze etiquette.</p> | <p>Coronavirus disease (COVID-19): Prevention and risks</p> | Done | 9/14/2020 |

COVID-19 OPERATIONAL PLAN FOR SCHOOLS

| | | | |
|--|---|--------------------|-------------------------|
| <p>K-12 Staff and Students - Community masks must be worn whenever physical distancing requirements outlined in the Return to School 2020 Document cannot be maintained.</p> | <p>Refer to Return to School 2020 Document – Appendix A Community Mask Poster</p> | <p>Done</p> | <p>8/26/2020</p> |
|--|---|--------------------|-------------------------|

Hand Hygiene and Cough / Sneeze Etiquette Notes: *Describe how the Hand Hygiene and Cough/Sneeze Etiquette procedures are being managed.*

We have a supply of 362 Cleaner/Disinfectant which is diluted and put into pre-labeled bottles. There will be at least 1 bottle available in every classroom within the school. Custodians will monitor supply levels.

Each classroom will have a supply of hand sanitizer (alcohol free) within the class that is for staff and student use, it is to be used under the watch of the teacher.

All staff and students are required to have a community mask readily available. Masks are to be worn at all times except when engages in physical education, sitting quietly and working at one’s desk (K-8), or while eating/drinking. Staff must wear face masks at all times except when eating/drinking, or when alone in a closed classroom or office area.

Table 1

| When Students Should Perform Hand Hygiene | When Staff Should Perform Hand Hygiene |
|---|---|
| <ul style="list-style-type: none"> • on arrival (if not feasible, hand sanitizing is acceptable); • before and after meals; • after using the toilet; • after blowing nose, coughing or sneezing; • after playing with shared toys, communal items or learning materials; • after handling animals or their waste; • before and after taking medications; • after playing or learning outside; and • whenever hands are visibly dirty. | <ul style="list-style-type: none"> • on arrival (if not feasible, hand sanitizing is acceptable); • before and after meals; • after using the toilet; • after blowing nose, coughing or sneezing; • after playing with shared toys, communal items or learning materials; • after handling animals or their waste; • before and after giving/taking medications; and • after playing or learning outside. • before and after handling food; • after helping a student use the toilet; • after breaks; • after contact with bodily fluids; • after handling garbage; • after removing gloves; • before and after giving medications; and • whenever hands are visibly dirty. |

| Action Items | Resources <i>(Examples, Templates, Guidance Documents, Posters, Links, Reference Documents)</i> | Status <i>(Done, In Progress, Not Started, N/A)</i> | Date Implemented |
|---|--|--|------------------|
| Section 10 - PERSONAL PROTECTIVE EQUIPMENT | | | |
| To ensure minimal interaction within various set groupings, where feasible and safe, install physical barriers. <i>*To ensure that members of vulnerable populations and students with complex needs are accommodated.</i> | Refer to Return to School 2020 Document – Appendix C, H Itinerant professional information in Return to School 2020 Document pg. 18 | Done | 8/19/2020 |

COVID-19 OPERATIONAL PLAN FOR SCHOOLS

| | | | |
|---|--|------|-----------|
| If a child requires to be toileted, the accompanying person(s) if not within the child's regular bubble, must wear community mask(s). | | Done | 9/3/2020 |
| Provide personal protective equipment – only for those situations that require it: | | | |
| Provide personal protective equipment for those for whom it has been determined to be necessary, PPE Options: | | Done | 9/3/2020 |
| Hand protection (gloves) | OHS Guide-PPE | Done | 9/2/2020 |
| Eye protection (safety glasses, goggles) | PPE Poster | Done | 9/2/2020 |
| Other PPE as determined necessary through the risk assessment (<i>face shield</i>) | District Student Support Services | Done | 9/2/2020 |
| Use masks (<i>medical preferred</i>) for individuals who exhibit symptoms of illness to minimize the risk of transmitting COVID-19. | Health Canada information on non-medical masks and face coverings Refer to Return to School 2020 Document – Appendix A Community Mask poster | Done | 8/14/2020 |

Personal Protective Equipment Notes: *Describe how requirements for personal protective equipment are being met and communicated.*

COVID-19 OPERATIONAL PLAN FOR SCHOOLS

We will supply plexiglass “sneeze guards” as requested and approved. Reception area is equipped with plexiglass barriers.

Nitrile gloves will be available for staff as required. Custodians must wear gloves when cleaning isolation room.

Teachers and EAs will have the option of a face shield to wear when physical distancing cannot be maintained. Note* Community mask must also be worn if a face shield is worn, a face shield does not solely replace a community mask unless deemed necessary through a risk assessment.

Students/Staff who are feeling unwell at the school will be provided with a medical mask to wear. Do not reuse medical masks.

A personal plan will be developed for students who can not wear a mask due to health conditions or other exceptionalities.

Masks are to be worn at all times except when engages in physical education, sitting quietly and working at one’s desk (K-8), or while eating/drinking.

Staff must wear face masks at all times except when eating/drinking, or when alone in a closed classroom or office area.

COVID-19 OPERATIONAL PLAN FOR SCHOOLS

| Action Items | Resources <i>(Examples, Templates, Guidance Documents, Posters, Links, Reference Documents)</i> | Status <i>(Done, In Progress, Not Started, N/A)</i> | Date Implemented |
|--|--|--|------------------|
| Section 11 - OCCUPATIONAL HEALTH & SAFETY ACT AND REGULATIONS | | | |
| Communicate to all staff and supervisors their responsibilities and rights under the OHS Act and regulations. | OHS Guide-Three Rights Refer to Orientation | Done | 9/3/2020 |
| Provide staff and student orientation, information and training on the applicable policies and processes implemented regarding COVID-19. | Refer to Orientation | Done | 9/3/2020 |
| Provide staff the employee training on the work refusal process. | Right to Refuse – Refer to Orientation | Done | 9/3/2020 |
| Ensure supervisors are knowledgeable of guidelines and processes established by Public Health. | Refer to Orientation | Done | 8/20/2020 |
| Ensure all employees receive information, instruction and training on the applicable personal protective equipment required to protect against COVID-19 in the school setting. | Refer to Orientation | Done | 9/3/2020 |
| Engage Joint Health & Safety Committee or health and safety representative, if applicable, in the periodic reviews / updates of this document. | OHS Guide-JHSC | Done | 10/15/2020 |
| Provide competent and sufficient supervision to ensure staff/employees, students, and visitors are complying with policies, procedures and processes established. | OHS Guide topic-Supervision | Done | 9/3/2020 |

COVID-19 OPERATIONAL PLAN FOR SCHOOLS

| | | | |
|--|---------------------------|---------------------------|--------------------------------------|
| <p>*School district Human Resources confirm process for addressing employee violations of policies and procedures.</p> | <p>School District HR</p> | <p>In Progress</p> | <p>Click or tap to enter a date.</p> |
|--|---------------------------|---------------------------|--------------------------------------|

OH&S Act and Regulations Notes: *Outline how the requirements for OH&S within a COVID response are being met.*

We have reviewed the Orientation with our staff during orientation and have discussed employee rights, protocol training, right to refuse process/vulnerable persons, etc.

Our school Joint Health & Safety committee will be involved with the monthly reviews of this Operational Plan.

COVID-19 OPERATIONAL PLAN FOR SCHOOLS

| Action Items | Resources <i>(Examples, Templates, Guidance Documents, Posters, Links, Reference Documents)</i> | Status <i>(Done, In Progress, Not Started, N/A)</i> | Date Implemented |
|--|---|--|------------------|
| Section 12 - OUTBREAK MANAGEMENT | | | |
| <p>Prepare for the possibility that an individual is a suspect COVID-19 case and may have been in the building. Inform your employees of the procedures to be followed and that confidentiality must be maintained. *Regional Public Health will notify the school about what is to be done.</p> <p>Students and staff must self-monitor throughout the day.</p> | <p>WorkSafeNB FAQ - Contact with someone tested/confirmed</p> <p>Refer to Return to School 2020 Document – Appendix K</p> | Done | 9/3/2020 |
| <p>Communicate to all staff the requirement to cooperate with Public Health if there is a suspected or confirmed case of COVID-19 in the school.</p> <p>Schools must engage the district from the beginning of the Outbreak Management Process.</p> <p>Regional Public Health will advise the employee, student and parent/guardian, and/or the employer if there is a need to communicate with the school and/or district during contact tracing.</p> <p>Once the district is advised by a staff member who has tested positive for COVID-19, they must then report it to WorkSafeNB.</p> | <p>WorkSafeNB FAQ</p> <p>Refer to Return to School 2020 Document – Appendix K</p> | Done | 9/3/2020 |

COVID-19 OPERATIONAL PLAN FOR SCHOOLS

Outbreak Management Notes: *Outline any specific considerations to outbreak management within your school.*

We have reviewed the Outbreak Management Plan procedures with our staff during orientation. Public Health will take the lead in the event of an outbreak. We will follow all protocols outlined in the EECD Outbreak Management Plan.

| Action Items | Resources <i>(Examples, Templates, Guidance Documents, Posters, Links, Reference Documents)</i> | Status <i>(Done, In Progress, Not Started, N/A)</i> | Date Implemented |
|--|--|--|------------------|
| Section 13 - MENTAL HEALTH | | | |
| Provide mental health support to all, including access to an employee assistance program (EAP) or information on public health supports, if available. | Phone: 1-800-663-1142 Accessible toll-free 24/7/365; self-register at www.homeweb.ca <ul style="list-style-type: none"> • Book an appointment or access help right away, including immediate crisis support • Short-term, solution-focused counselling — a client-centered approach to goal setting and problem solving • Bridging to community services, specialized referrals, and treatment if needed • Multilingual diverse clinical network; minimum of master's degree & five years' experience • For employees, spouse/partner, eligible dependents • Voluntary, confidential, no cost to the user Guidelines for Re-Entry into the School Setting During the Pandemic: Managing Social, Emotional and Traumatic Impact NACTATR Guide to School Re-Entry | Done | 9/3/2020 |

COVID-19 OPERATIONAL PLAN FOR SCHOOLS

Mental Health Notes: *Describe how mental health resources will be communicated to staff.*

- Review through orientation the supports available to staff
- Consistent communication of supports available

We have shared mental health resources during our orientation. We will periodically make reminders to staff regarding the importance of looking after their mental health and reminding them of resources available.

| Action Items | Resources <i>(Examples, Templates, Guidance Documents, Posters, Links, Reference Documents)</i> | Status <i>(Done, In Progress, Not Started, N/A)</i> | Date Implemented |
|---|---|--|-------------------------------|
| Section 14 - ADDITIONAL CONSIDERATIONS/OTHER | | | |
| Ensure schools that provide food abide by applicable regulations. | Return to School document Pg. 13, 14, 15 Refer to GNB Website or GOC Website | In Progress | 9/3/2020 |
| External Organizations operating within school <i>(Obtain a copy of their Operational Plan)</i> | | In Progress | Click or tap to enter a date. |
| Utilize Bottle refilling stations, or Plan B – Water Coolers, water fountains will be turned off. Put up signage. | Insert Water Bottle Signs | Done | 9/3/2020 |

COVID-19 OPERATIONAL PLAN FOR SCHOOLS

Additional Consideration / Other Notes: *Describe how any additional considerations are being met.*

-Library changing hours to accommodate school day visits. Limits of 5 persons in library at a time with library staff manage incoming public traffic and log visits. A portable library carousel is developed to provide “curb side” access to classes.

Toast cart will continue through a delivery to classrooms. We will ensure that persons serving the food are familiar with operational plan and procedures the building, wear gloves and a community mask. Students/staff will not serve themselves.

*Note- toast cart will not be available during Orange phases.

Fountains have been replaced with bottle fillers. Signage has been posted to remind people not to touch their bottle to the spout as well as a reminder that fountains are closed.

-External organizations operating within the school will supply their plan and work in cooperation with this plan.