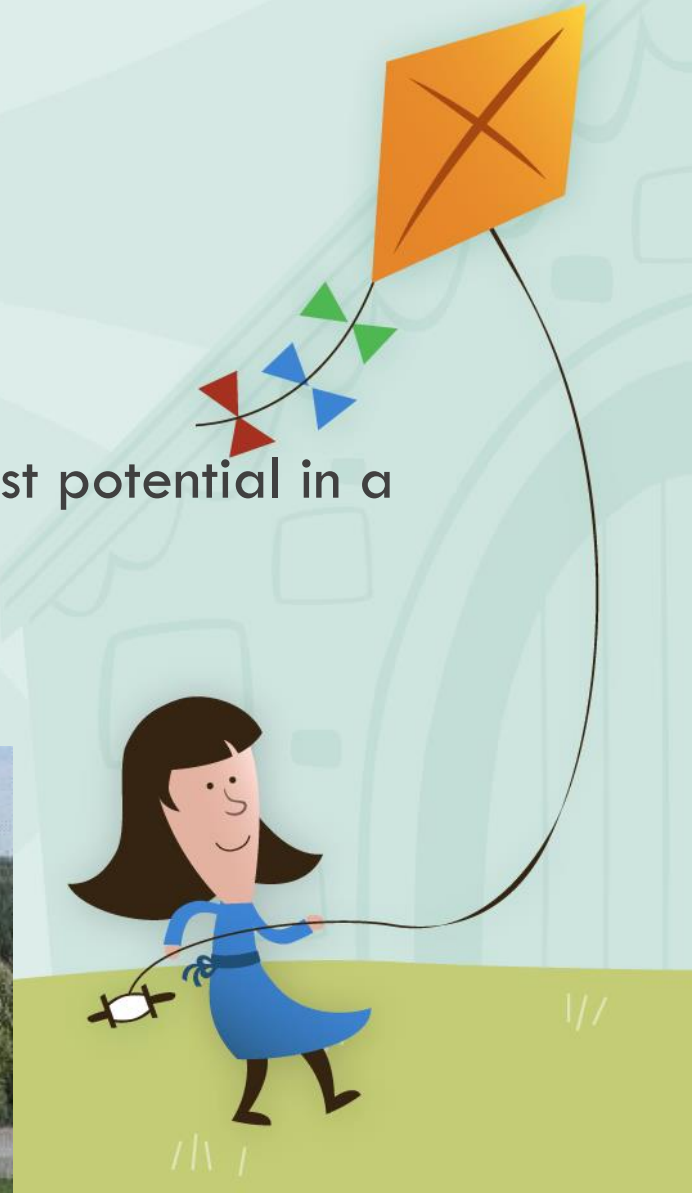


Welcome to Hampton Elementary School! Bienvenue!

Our mission is to:

Help and believe in

Each student so that he or she can reach their highest potential in a
Safe , supportive, inclusive environment



At HES all staff will:

Be safe, supportive and inclusive

Encourage student success

Lead with a “Can Do” attitude

Invest in school pride

Engage students in personal challenges

Value risk taking and confidence

Expect students to succeed



Hawk
Eye
Sharp



Peanut and Nut Free Classroom

Nuts, peanuts or any products containing nuts or peanuts are **NOT** allowed.



Please wash hands.

Clean hands help you to stay healthy and keep our friends safe.

Thank You!

Peanut/Nut free school & Scent Free Space

NO SCENTED

PRODUCTS

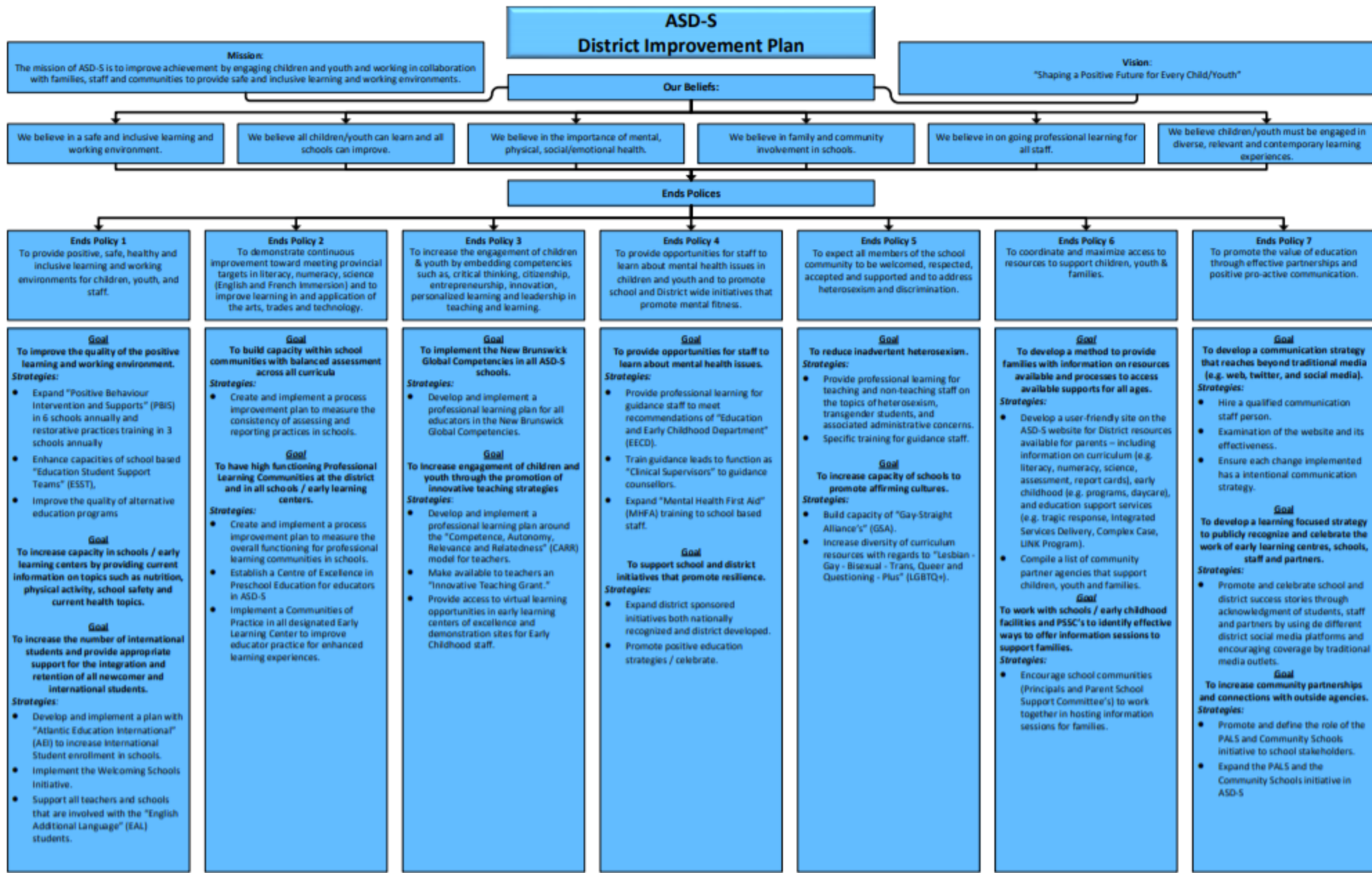
PLEASE!



ASD 2020-2021 School Calendar

September	7	No Classes - Labour Day
	8-11	Students return through a staggered entry process scheduled by the school. Families will receive communication from the school.
October	12	No Classes - Thanksgiving Day
	13-16	Registration for Students Entering Kindergarten in 2021-2022
November	11	No Classes - Remembrance Day
	12	Report Cards Issued grades 9-12
	20	No Classes for K-8 students - Professional Learning (1/2 day) and Report Card Preparation (1/2 day) No Classes for high school students – Parent/Teacher/Student Conferences (1/2 day) and Professional Learning (1/2 day)
December	1	Report Cards Issued grades K-8
	4	No Classes for K-8 students - Parent/Teacher/Student Conferences (1/2 day) and School Improvement Planning (1/2 day) No Classes for high school students – Professional Learning (1/2 day) and School Improvement Planning (1/2 day)
	18	Last Day of Classes before holidays
January	4	First Day for Students
	25-29	Assessment/Demonstration of Learning Week - High School Only
February	1	No Classes for K-8 students – Professional Learning Day
	1-2	No Classes for high school students – Turnaround Days and prep for second semester
	3	Semester 2 Begins - High School Only
	15	No Classes - Family Day
March	1-5	No Classes - March Break
	19	No Classes for K-8 students - Professional Learning (1/2 day) and Report Card Preparation (1/2 day) No Classes for high school students – Professional Learning
	31	Report Cards Issued grades K-8
April	2	No Classes - Good Friday
	5	No Classes - Easter Monday
	12	Report Cards Issued grades 9-12
	14	No Classes for students K-12 - Parent/Teacher/Student Conferences (1/2 day) and Professional Learning (1/2 day)
May	7	No Classes K-12 - NBTA Council Day
	10	No Classes K-12 - NBTA Branch Meeting Day
	24	No Classes - Victoria Day
June	14-18	Assessment/Demonstration of Learning Week - High School Only
	25	Last Day for Students – Final Report Card Day (K-12)





At Hampton Elementary, we all care about the safety of your children. This year, student arrival will have some challenges due to an increase in students being driven to school. We have thought through many options and have worked with our neighboring schools (Hampton Middle and Dr. A. T. Leatherbarrow) as well as the Town of Hampton. We believe we have produced a plan to make things as easy as possible.



Before Coming to School

Tell an adult if you have any of these:



Fever above 38 degrees celsius



A new cough, or worsening chronic cough



Difficulty breathing



Runny nose



Sore throat



Headache



A new onset of fatigue



A new onset of muscle pain



Diarrhea



Loss of sense of taste



Loss of sense of smell



Purple marks on children's fingers or toes
markings on the fingers and toes

Stay home from school if 2 or more of these symptoms and have an adult call Telecare 811 or their primary healthcare provider

For the latest information visit: www.gnb.ca/coronavirus

New Brunswick

Important Items to know

1. Prepare

In the car, your child should have their bookbag ready to go on their lap or at their feet in the car

2. Practice

Make sure your child knows how to take off their seatbelt, get out of the car on their own and close the door.

3. Masks

All children will be required to wear a mask after getting out of the car until they reach their classroom bubble.

4. Drop Off Only

Even though it may feel difficult, please do not park in our parking lot and walk your child into the school



We will have three drop off areas in the mornings for students being driven to school.

Hawk's Eye
Playground
Gr. 2 & 3
students

Hawk's Nest
Playground
Gr. 4 & 5
students

Hampton
Community
Center

*****Traffic on School Street will be ONE WAY traffic only (signage to be displayed) – EXPECT delays if using School Street for drop offs due to bus unloading.**



Hampton Community Centre Drop Off



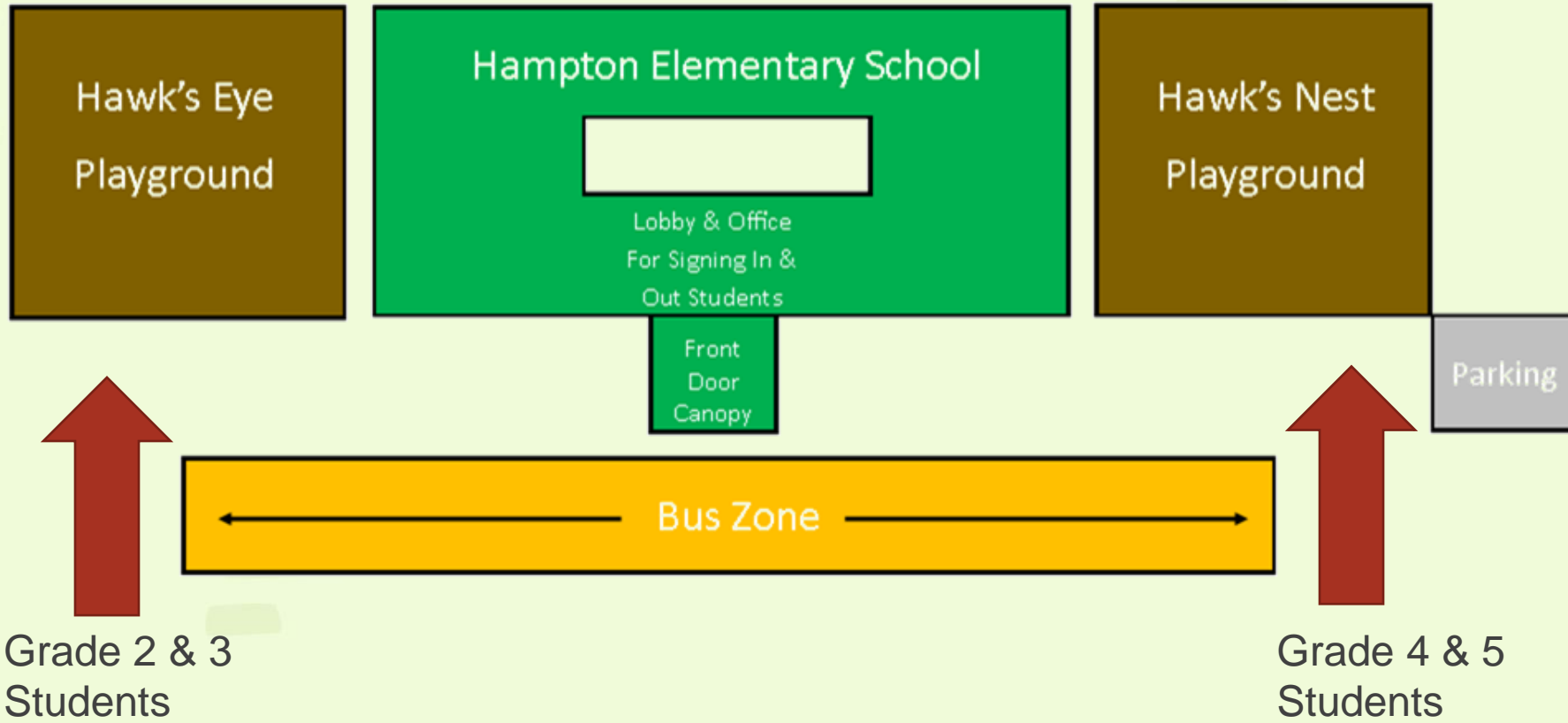
***PINK line is student walking route.

Families utilizing this option will enter through the entrance of the community centre and follow the arrows to the back of the parking lot where students will unload on the right-hand side of the vehicle.

Students will walk the short path and sidewalk to the school.

Supervision is the responsibility of the parent.

Bus Zone and Drop-Off/Pick-Up Zones



Starting our day...

Traffic Notes

All students will enter the school immediately upon arrival. Teacher supervision will begin at 7:50 a.m. inside the school.

Students are encouraged to use our *new* drop off designated area at the Hampton Community center.

Passing a school bus when the red lights are flashing is a serious offense and may result in a substantial fine. Please remember the speed limit on School Street is 20 kilometers/hr.

Our staff are exiting their vehicles in the morning during Drop Off so please check both ways before you pull away.



Hampton Elementary School Bells

Grades 2, 3, 4 and 5

7:50	<i>Buses Start to Arrive/Supervision Begins</i>
8:15	All Students in Classroom
8:25	Announcements
8:30	Instruction Block # 1
10:30	RECESS: Snack in Classroom
10:45	Instruction Block # 2
12:15-12:40	Time to Play or Time to Eat
12:45-1:10	Time to Play or Time to Eat
1:15	Instruction Block # 3
2:35	End of Instruction
2:40	Dismissal
2:45	<i>Buses Depart</i>



*****Each class will also have a morning activity/exercise break within their class bubble at a time that works for them.**

“Play First, Then Eat” OR “Eat First, Then Play”

(also known as Recess Before Lunch)

“Play First, Then Eat” is simply a change in the traditional scheduling order of lunch time and recess. This idea was first put into practice in Montana and has gained popularity across North America. Many schools and districts in the US have adopted this model as have schools in Canada. In our own province and district “Play First, Then Eat” has been implemented successfully.

The benefits reported include:

1. Teachers notice that children are more settled after eating and are more ready to start afternoon learning.
2. Children waste less food and drink more milk because they build up an appetite while playing outside.
3. There is improved behaviour in afternoon classes.



Due to COVID regulations on the number of areas where students may play, classes will be alternating MONTHLY with either Play First, Then Eat or Eat First, Then Play.



School Supplies Fees

We will be collecting student fees for all Grade 2 to 5 students (English and French Immersion)—**total of \$50**. Fees are due by the end of September.

The fees cover:

- **\$40**--All student consumables such as pencils, notebooks, duotangs, etc.; We do ask for parents to purchase a few individual items including: Lunch Box/Bag, Personal Water bottle, 2-3 boxes of tissues (kleenex etc), Headphones/Ear buds (whichever your child prefers and with microphone if possible – labelled and sent in a Ziploc bag), Pencil Case, Indoor sneakers, Backpack, Community face mask, Scent free hand sanitizer (*optional)
- **\$10**—School wide events and cultural activities/performances.



*****There may be times towards the end of the year when supplies may need to be replenished. If so, the homeroom teacher would communicate this need.**

School Cash On-Line: Safe and Easy!

Look for this link on our website's homepage



No more searching around the house for enough loonies and toonies or remembering to get cash for milk, hot lunch, or student fees!

No more sending money in backpacks and hoping it doesn't get lost or forgotten!



- ❖ Registration is very easy. You just need to search for your child using his/her birthdate.
- ❖ Payment may be made by credit card or e-cheque (using the digits from the bottom of your cheque). There is also a 'my wallet' feature available.
- ❖ You are welcome to pay student fees beginning August 1! We will set up an installment option if that is easier for you.
- ❖ All milk and lunch orders/payments will be done through School Cash On-Line. (Please ask for a paper copy if you do not have internet access at home.)



Playgrounds

There are two playgrounds at Hampton Elementary School.

All Grade 2FI and Grade 3 students play on the Hawks Eye playground.

Grade 4 students and all Grade 5 students play on the Hawks Nest playground.

Both areas contain playground equipment and paved areas for games such as basketball and skipping, etc.



School Code of Conduct



Hampton Elementary is a

- Kind Hands
- Kind Feet
- Kind Words
- Be Kind!

School



The staff of Hampton Elementary define, practice and model specific skills to ensure smooth transitions and orderly conduct. As a result, our school has been recognized for having a school environment that is calm, relaxed, and dedicated to student learning. This has contributed to a great positive learning environment!

Skills for the first two months include:

Entering building
Speaking to others
Morning Routine
Hall Passes
Moving through the school
Visitors
Bathroom
Leaving the school
Fire Drill
Listening
Asking for help



Skillstreaming

WITS

		W alk Away
		I gnore
		T alk it Out
		S eek Help



All students are trained in using their WITS:

I promise to use my WITS, to walk away, ignore, talk it out and seek help when I'm dealing with teasing and bullying.

I promise to also help other kids use their WITS to keep my school and my community a safe and fun place to be and learn.



Programs & Activities

Student Leadership and Clubs:

Peer Helpers
Greenhouse Club
Choir
Games & Crib
Chess Club
Girls' Group/Go Girls
Zones of Regulation
Drawing and Coloring
Knitting
Lego Club
Super Flex
Remote Control club
Rainbows
YouTube Team
Cursive Writing
Reading

Some Other Programs in Our School:

Coding for Kids
GoGo Afterschool Program
H.A.L.L. Preschool Program
Mad Science
Robo Science - Robotics

School Activities:

Hawk Awards
Stellar Student Recognition
Roots of Empathy
Morning Fitness/Open Gym
Open Library
Intramural Programs
Empty Stocking Fund
Track & Field/Cross Country
Terry Fox Walk
Assemblies
Breakfast Program
Recycling and Composting

****Due to COVID 19, our clubs and activities may run differently this year.**



Our school uses School Connects, school website and e-mail as a means of keeping families informed of upcoming school and community events. Please provide the school with an e-mail address to send notices and newsletters in order to help save the amount of paper we send to your home.

Newsletters are sent by e-mail and posted on our school website at the first of each month. In addition there is a wealth of information for parents and links to teachers' classroom websites. You can check out all this info on our school website at <http://hampton-elementary.nbed.nb.ca>



Communication



The staff directory includes email addresses; feel free to contact us by phone or e-mail (please don't use e-mail for after school changes)

Our student handbook can be accessed here


Check your child's bus number, time, and sign up for notifications—call 832-6429 if you have any questions

Find Information for Parents here including links to BusPlanner, COVID Guide for Parents and much more.

The Vision of Hampton Elementary School is to...
 Help and believe in Each student so that they can achieve their highest potential in a Safe, supportive, inclusive environment.

Our beliefs that guide our interaction and teaching practices are...

The Mission of Hampton Elementary is to...
 Be safe, supportive and inclusive
 Encourage student success
 Lead with a "Can Do" attitude
 Invest in school pride
 Engage students in personal challenges
 Value risk taking and confidence
 Expect students to succeed



All the news—upcoming events (calendar also above), weekly Hawk Squawks, & Monthly Newsletters and Calendars

School Cash On-Line



Click here for payment on-line for Student Supply Fees,, etc.

Safe Arrival



Click here to report if your child will be absent or late

ASD-S Inclusion Weather



One of the locations to check for school closures, etc.

Daily Announcements

- Tuesday, May 21, 2019
- Friday, May 17, 2019
- Thursday, May 16, 2019
- Wednesday, May 15, 2019
- Tuesday, May 14, 2019

Watch for up-to-date daily summary including current clubs available

Upcoming Events

- Grade 4 Provincial Assessments This Week and Next
 May 21, 2019 at 9:00 PM - 8:50 PM
- Volunteer Breakfast - Thank You Volunteers!
 May 23, 2019 at 8:00 AM - 8:45 AM
- PJ Day for Diabetes Research
 May 24, 2019 at 9:00 PM - 8:50 PM
- PSSC Meeting
 May 27, 2019 at 6:30 PM - 7:30 PM

Weekly Messages

- H.E.S Hawk Squawk May 20-24, 2019
- H.E.S Hawk Squawk May 13-17, 2019
- H.E.S Hawk Squawk May 6-10, 2019
- H.E.S Hawk Squawk Apr 29-May 3, 2019

Monthly Newsletters

- May 2019 Newsletter.pdf
- May 2019 calendar.pdf
- April 2019 Newsletter.pdf
- April 2019 Calendar.pdf
- March 2019 Newsletter.pdf

Welcome Parents—Learn About Our School Here



Click here for school information PowerPoint!

Welcome to HES 2020-2021

Classroom Configuration 2020-2021

Hawk's Eye Wing

Gr 2 Mme Aubin-Martin

Gr 2 Mme Reay

Gr 2 Mme Bendixen

Gr 3 Mme Schofield

Gr 3 M. Prosser

Gr 3 Mme Long

Gr 3 Mrs. Salgado

Gr 3 Mrs. Kennedy

Hawks Nest Wing

Gr 4 Mr. O'Brien

Gr 4 Ms. Shannon

Gr 4 Ms. Harlow

Gr 4 Mme Vallis

Gr 5 Mme Melanson

Gr 5 Mme Bradshaw

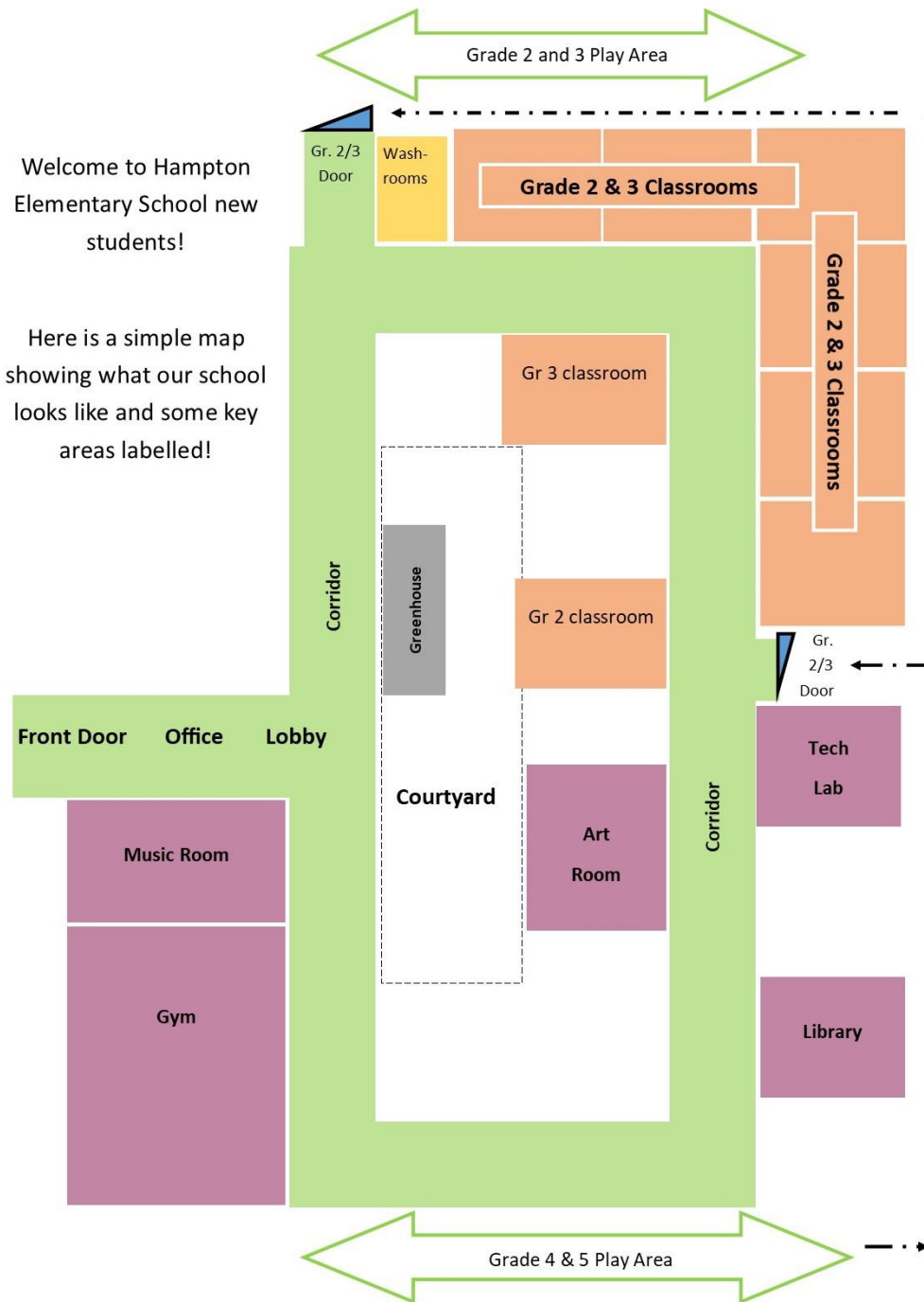
Gr 5 Mrs. Smith

Gr 5 Ms. Creamer



Welcome to Hampton Elementary School new students!

Here is a simple map showing what our school looks like and some key areas labelled!



Classroom Expectations

I respect myself,
others and the
environment.

I am responsible for
my belongings and
helping to keep our
classroom clean.

I listen to the
person talking
without interrupting
or disrupting.

I will raise my hand
to contribute to
classroom
discussions.

I will always give
my 100%.

RESPECT is my
number one
expectation at all
times.



How to Protect Ourselves and Others:



Keep Your
Distance



Clean Your
Hands



Cover Your
Cough &
Sneeze

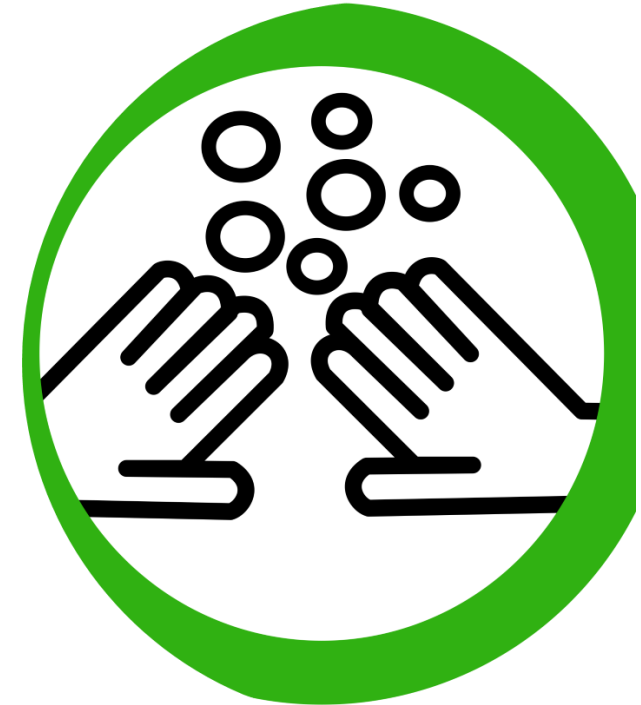


Wear Your
Mask



When should you clean your hands?

- When you arrive at school
- Before and after meals
- After using the bathroom
- After blowing your nose or coughing
- After playing with shared toys or school supplies
- After playing outside
- Before and after taking medications
- Before and after handling a mask
- After handling animals
- Whenever you can see dirt on your hands



Homework Expectations

A reasonable amount of homework provides an important means to support in the following ways:

- 1) It can periodically allow children to complete unfinished work at home.
- 2) It gives parents an opportunity to reinforce literacy or math facts that have been taught at school.

Homework assignments can be viewed daily in the student agenda. Any important communication between parents and teachers can be recorded in the student agenda.

Homework should take about 10 minutes for each grade level. For example, grade three, $10 \times 3 = 30$ minutes for that evening.



Homework Expectations cont.

The classroom teacher will communicate the homework expectations. Homework is designed to reinforce and review work that has already been taught. Homework is to be completed in a reasonable amount of time and if there are any concerns about this, then please contact the classroom teacher.



New student? Questions?

Contact Mrs. Blanchard

sarah.blanchard@nbed.nb.ca



THANK YOU