

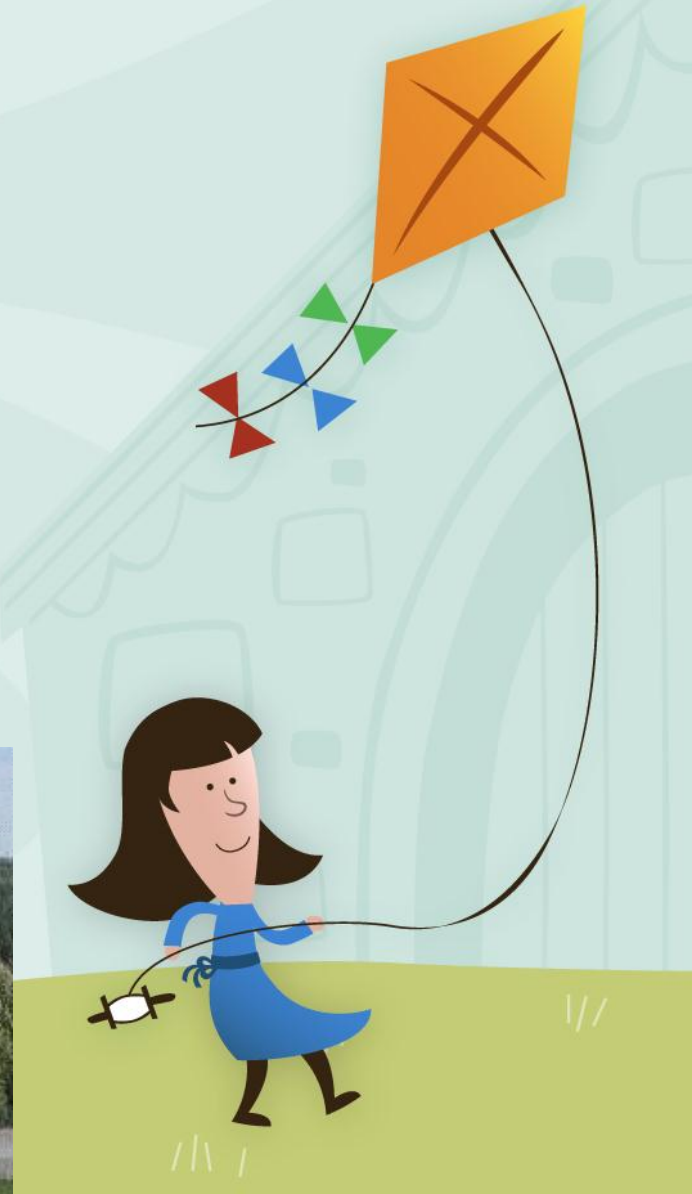
# Welcome to Hampton Elementary School! Bienvenue!

Our mission is to:

**Help and believe in**

**Each student so that he or she can reach their highest potential in a**

**Safe , supportive, inclusive environment**



At HES all staff will:

**Be safe, supportive and inclusive**

**Encourage student success**

**Lead with a “Can Do” attitude**

**Invest in school pride**

**Engage students in personal challenges**

**Value risk taking and confidence**

**Expect students to succeed**



# Peanut and Nut Free Classroom

Nuts, peanuts or any products containing nuts or peanuts are **NOT** allowed.



**Please wash hands.**

Clean hands help you to stay healthy and keep our friends safe.

**Thank You!**

Peanut/Nut free school  
&  
Scent Free Space

**NO SCENTED**

**PRODUCTS**

**PLEASE!**



## NEW BRUNSWICK SCHOOL CALENDAR 2015-2016

| Month     | Dates | Events                   |
|-----------|-------|--------------------------|
| August    | 31    | Full Administration Day* |
|           | 1-2   | Council Day              |
| September | 3     | Full Administration Day* |
|           | 7     | Labour Day               |
|           | 8     | First Day of Classes     |
| October   | 12    | Thanksgiving Day         |
| November  | 11    | Remembrance Day          |
| December  | 18    | Last Day of Classes      |
| January   | 4     | First day of Classes     |
| February  |       |                          |
| March     | 7-11  | March Break              |
|           | 25    | Good Friday              |
|           | 28    | Easter Monday            |
| April     |       |                          |
| May       | 6     | Council Day              |
|           | 23    | Victoria Day             |
| June      | 24    | Last Day for Students    |

\* Please visit your school district website for additional information.



## ACTION PLAN FOR 2012 – 2015 SCHOOL IMPROVEMENT PLAN FOR HAMPTON ELEMENTARY SCHOOL

| GOALS   | ACTIONS  | TIME                   | RESPONSIBILITY               |
|---|--|------------------------|------------------------------|
| <p>1. Using a <a href="#">balanced literacy</a> approach to develop and improve instructional practices, assessment and intervention for Literacy so that 85% of our students receive AA and above based on the provincial reading and writing standards</p> <p><a href="#">Grade 3</a><br/><a href="#">Grade 4</a><br/><a href="#">Grade 5</a></p> <p>*update: 85% of our students receive AA and above based on <a href="#">classroom benchmarks</a> in reading and writing</p> | All teachers are encouraged to use the <a href="#">Daily 5/Café</a> approach to literacy instruction including <a href="#">Guided Reading</a>  | Sept. 2012-Jun. 2015   | All Staff                    |
|   | <a href="#">PLCs</a> focus on writing and using our provincial grade level rubrics to assess and compare samples.  | Sept. 2012-Jun. 2015   | All Staff                    |
|   | Three times yearly all students will complete a <a href="#">demand piece</a> of writing. Teachers will mark writing together in <a href="#">PLCS</a> and these <a href="#">benchmarks</a> will form instruction. | Sept. 2012-Jun. 2015   | All Staff                    |
|   | School-wide celebration of "W.O.W." writing.   | Jan. 2015-Jun. 2015    | All Staff/EST-Resource       |
|   | During literacy instruction model the <a href="#">6 traits of writing</a> , focusing on the specific traits Organization and Paragraphing (based on Sept. 2014 data)   | Sept. 2012-Jun. 2015   | All Staff                    |
|   | Use student generated exemplars in classes to help students understand what an acceptable piece of writing is.   | Sept. 2012-Jun. 2015   | All Staff / Literacy Leads   |
|   | Literacy Night at school. (WITS focused)   | February 2015          | All Staff                    |
|   | <a href="#">Writers in the School Program</a> (Author Visit) <ul style="list-style-type: none"> <li>• Heidi Stoddard – Artist/Author</li> <li>• Ann Scott – "The Boy Who Was Bullied"</li> </ul>                 | Oct. 2012/Feb./2014    | Administrative Team          |
|   | Word of the Week – building new vocabulary *include on weekly parent synrevoice  | 2014-2015 Weekly       | Classrooms/Principal         |
|   | Data Wall to include reading levels of all students at HES.<br>*currently working on a French immersion Wall*  | Jan. 2014-Jun. 2015    | All Staff                    |
| <p>2. Enhance regular communication with parents</p> <ul style="list-style-type: none"> <li>• Monthly class newsletter stating curriculum outcome overview in student/parent friendly language.</li> <li>• 70% of teachers will have a class website by end of 2014.</li> </ul>   | Update the lobby television with pictures and captions.  | monthly                | EST-Resource                 |
|   | New Website/Synrevoice   | Sept. 2012 - Jun. 2015 | Principal and District Staff |
|   | Newsletter – specific link. (by email and website)   | Sept. 2012 - Jun. 2015 | All Staff                    |
|   | In-Service from District Tech Mentors  | Nov. 2013 - Jan. 2014  | District Mentors             |
|   | Evening Transition Meeting for parents of grade 2 students will be held in the spring  | *February 2015         | PSSC and Principal           |
|   | HES June Newsletter sent home to all grade 2 students.   | May 2013 – June 2015   | Principal                    |
|   | The School Improvement plan will be sent home in user friendly language for all Students at HES including hyperlinks   | *February 2015         | PSSC and Principal           |
|   | Meet the teacher Social held prior to the first day of school and children bring school supplies   | Sept.2012 – Jun. 2015  | PSSC & Principal             |

|  |   |                        |  |
|--|---|------------------------|--|
| <p>3. To develop and improve instructional practices, assessment and intervention for Numeracy so that 85% of our students receive AA on the provincial and District Math assessments</p> <p><a href="#">Grade 3</a><br/><a href="#">Grade 4</a><br/><a href="#">Grade 5</a></p> | Professional Learning Communities to use information from <a href="#">common assessments</a> to implement remediation, interventions and enrichment activities. | Sept.2012 – Jun. 2015  | All Staff  |
|  | School-wide common strategies given to children to help them solve word problems.   | Sept.2012-Jun. 2015    | All Staff/District Math Mentors.                 |
|  | Develop Common Math understanding to use among staff and students to enable students to explain in Math language how they solved a problem.                     | Sept.2012 – Jun. 2015  | All Staff  |
|  | Develop common assessments that focus on questions that relate to Number/Problem-Solving at all grades  | Sept.2012 – Jun. 2015  | All Staff in consultation with Math Mentor.      |
|  | Develop updated videos of math strategies commonly used in classrooms to post on the <a href="#">Website</a> *links to YouTube using Open Number Line           | Jan. 2014 – Jun. 2015  | EST-Resource                                     |
|  | Blanchard's Brainteaser in monthly newsletter   | Nov 2014-June 2015     | Principal  |
|  | <a href="#">Guided Math</a> Book Study  | January 2015-June 2015 | All Staff/District Math Mentors                  |
|  | Math Magic Room   | Dec. 2014-June 2015    | All Staff  |
|  | Math Journals   |                        |  |
| <p>4. Strengthen areas of school climate by concentration on staff and students working, learning and playing in a safe, positive, healthy environment.</p>  | Guidance Corner (information about positive school climate, good mental health, healthy and positive parenting) will be in the monthly school newsletter.       | Sept. 2012 – Jun. 2015 | SIW, Guidance, Admin.                            |
|  | Gather information from the Tell Them From Me Student Survey to assist with program planning in the area of school climate.                                     | January 2014.          | All Staff  |
|  | Noontime Clubs and Intramurals  | Sept. 2012 – Jun. 2015 | Guidance, SIW, EST-Resource and Phys. Ed teacher |
|  | <a href="#">Skill Streaming</a> (Skills and Routines are defined, modeled and practiced for each month in the classroom).                                       | Sept. 2012-June 2015   | All Staff  |
|  | PD on Mental Health Issues and Children   | August 2014            | Guidance   |
|  | Updated <a href="#">Pyramid of intervention</a>   | September 2014         | ESST Team  |
|  | Apply for grant and resources (Healthy Learning Grant, Phys. Ed Wellness Grant, WITS grant etc)   | January 2014           | Admin/Guidance                                   |
|  | Identify community leader   | February 2014          | Admin  |
|  | <a href="#">WITS</a> Teacher Accreditation Program (Alison Lynch)   | April 2014/August 2014 | WITS Rep   |
|  | Integrate <a href="#">WITS</a> strategies school wide   | September 2014         | All Staff  |
|  | Morning Open Gym Fitness Tues, Weds. Thurs  | Oct 2014-June 2015     | Phys. Ed teacher                                 |
|  | Breakfast Program in the Classroom *Addition of Fruit (Jan. 2015)   | Nov 2014-June 2015     | All Staff/Administration                         |
|  | <a href="#">I'm Thumbody Program</a> (Grade 3 classes)  | 2014-2015              | Guidance, SIW                                    |
| Power Lab – Friday Noontime Group  | February 2015   | Seely                  |  |

# Hampton Elementary School Bells

## Grades 3, 4 and 5

|       |   |
|-------|---|
| 7:50  | <i>Buses start to arrive/Supervision begins</i> |
| 8:10  | Enter school                                    |
| 8:25  | Announcements                                   |
| 8:30  | Instruction Block # 1                           |
| 10:00 | <b>RECESS: Time to Play</b>                     |
| 10:15 | Instruction Block # 2                           |
| 11:50 | <b>NOON: Time to Play</b>                       |
| 12:10 | <b>NOON: Time to Eat</b>                        |
| 12:35 | Instruction Block # 3                           |
| 2:35  | End of Instruction                              |
| 2:40  | Dismissal                                       |
| 2:45  | <i>Buses Depart</i>                             |



# Starting our day...

## Traffic Notes

When dropping off your children in the morning please proceed beyond the first crosswalk and do not drop children off in the playground area as that is a bus drop off zone. If you must pick up your children after school, please park in the spaces adjacent to the playground. During inclement weather, or very cold weather, please drop off your children near the front entrance of the school **close** to doors near the traffic circle to allow children to be dropped off by the buses directly in front of the school and to avoid traffic congestion on wet or cold weather mornings.

Passing a school bus when the red lights are flashing is a serious offense and may result in a substantial fine. Please remember the speed limit on School Street is 20 kilometers





# School Fees

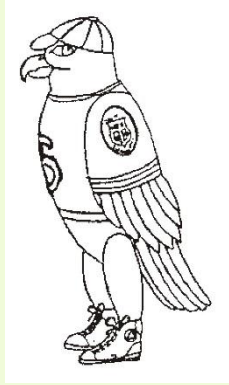
We will be collecting student fees during the month of September. Students are also required to shop for their own supplies – a list will be made available soon.

The fees cover skating, cultural events and student agendas. All Grades 3-5 (English and French Immersion) \$20.00.

Plans are to have a Meet the Teacher evening before school begins in the Fall, so that students may bring their supplies and drop them off in their classrooms.



**Meet the Teacher: Wednesday, September 2, 2015 6:30PM**



# School Code of Conduct

Hampton Elementary is a

- Hands off
- Feet Off
- Words off school



The staff of Hampton Elementary define, practice and model specific skills to ensure smooth transitions and orderly conduct. As a result, our school has been recognized for having a school environment that is calm, relaxed, and dedicated to student learning. This has contributed to a great positive learning environment!

Skills for the first two months include:

|                           |
|---------------------------|
| Entering building         |
| Speaking to others        |
| Morning Routine           |
| Hall Passes               |
| Moving through the school |
| Visitors                  |
| Bathroom                  |
| Leaving the school        |
| Fire Drill                |
| Listening                 |
| Asking for help           |



# Skillstreaming

# WITS



I promise to use my WITS, to walk away, ignore, talk it out and seek help when I'm dealing with teasing and bullying.

I promise to also help other kids use their WITS to keep my school and my community a safe and fun place to be and learn.



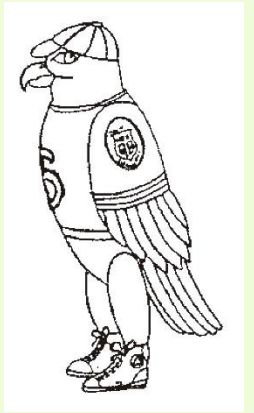
# “Play First, Then Eat”

(also known as Recess Before Lunch)

“Play First, Then Eat” is simply a change in the traditional scheduling order of lunch time and recess. This idea was first put into practice in Montana and has gained popularity across North America. Many schools and districts in the US have adopted this model as have schools in Canada. In our own province and district “Play First, Then Eat” has been implemented successfully.

The benefits reported include:

1. Teachers notice that children are more settled after eating and are more ready to start afternoon learning.
2. Children waste less food and drink more milk because they build up an appetite while playing outside.
3. There is improved behaviour in afternoon classes.



# Playgrounds

There are two playgrounds at Hampton Elementary School.

Grade Five students play on the Hawk's Nest and the students in grade Three and Four play on the other playground. Both areas contain playground equipment and paved areas for games such as basketball and skipping, etc.

The Home & School Association is currently working on playground upgrades so that both playgrounds have age-appropriate equipment.

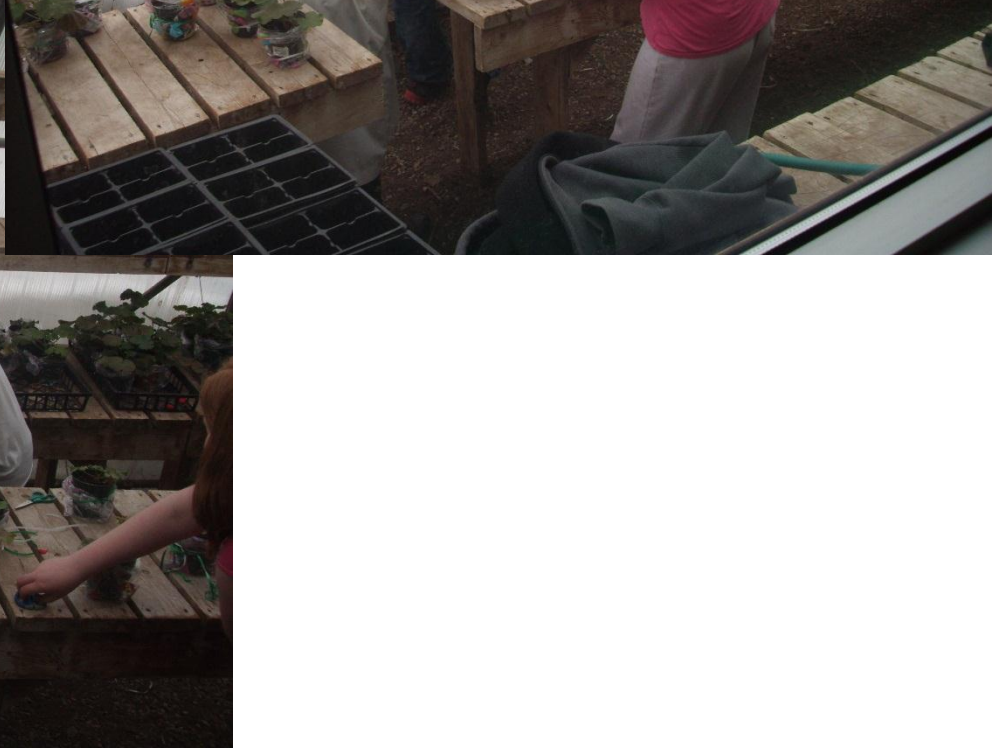
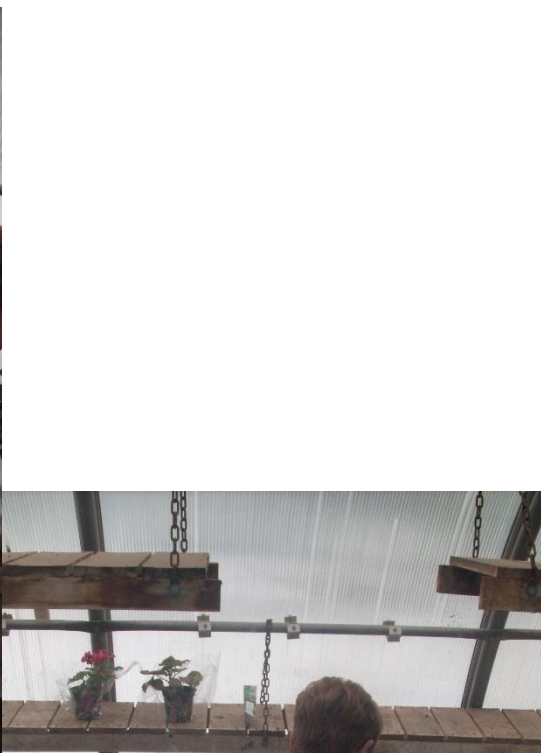
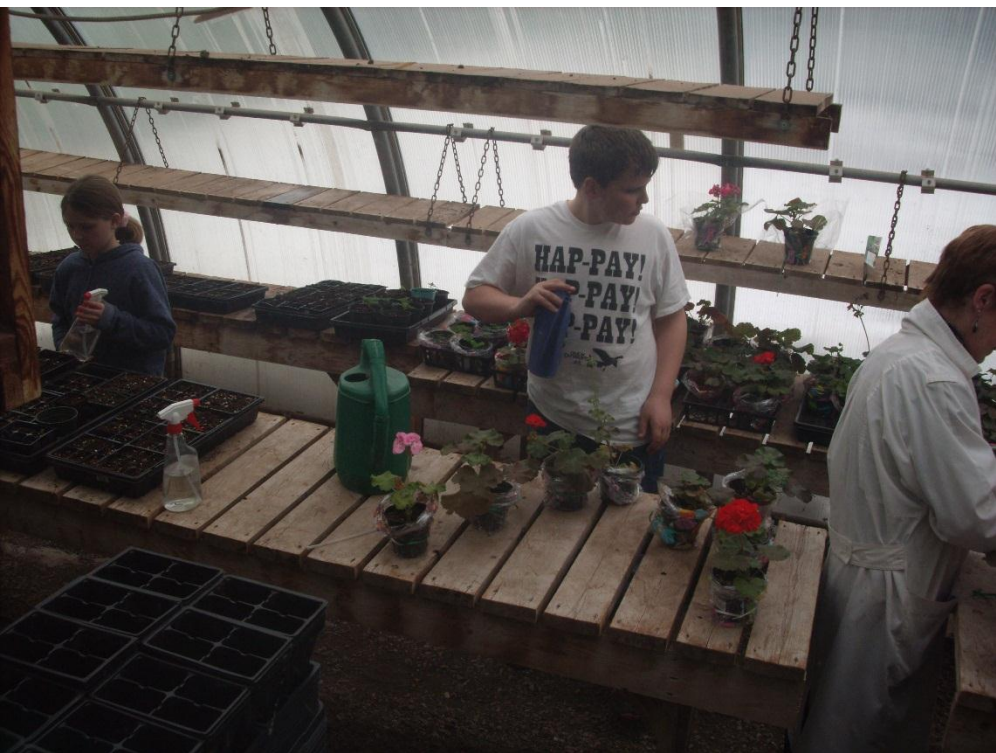


# Programs & Activities

GoGo Afterschool Program  
Morning Fitness/Open Gym  
Open Library  
Art Club  
Intramural programs  
Empty Stocking Fund  
Track & Field/Cross Country  
Terry Fox Walk  
H.A.L.L. Preschool Program  
Mad Science  
Variety of noontime clubs  
Assemblies  
Breakfast Program  
Recycling and Composting  
After School Writing Club

**Noontime clubs:**  
Chess Club  
Girl's Group  
Friendship Club  
Lego Club  
Super Flex  
Volcano club  
Remote Control club  
Veniot's Venue  
Roots of Empathy  
Greenhouse Club  
Rainbows Program  
I'm Thumbody Program





Greenhouse  
Club





Family Literacy Day - January 27<sup>th</sup>, 2015



# THE TERRY FOX RUN

for cancer research



Terry Fox Walk – Hampton Middle School



Chess Club Wednesday @ Noon  
Over 45 members!

## Hot Lunch

Lunch tickets are sold each Monday morning (a book of 10 for 25.00) for hot lunch on Monday & Wednesday (pizza), Thursday (subway sandwiches) and Friday (Kredls). Most items cost one ticket and is collected each hot lunch day by the homeroom teacher. To cut down on the amount of money to be counted and collected for hot lunch each week, we encourage you to buy tickets each Monday.



\*this may look different for the 2015-2016 school year

## Milk

HES sells chocolate and white milk and is pre-ordered. The cost is \$0.45 for white and \$0.50 for chocolate. The first milk order will begin in mid-September and will last for about 40 days. Milk order forms are sent home, in advance, so parents know when to order their milk. There are approximately four orders per year and we offer milk until the end of June.



papayas

pumelos



rambutan

pomegranates

avocados

Learning about Healthy Eating with Mr. Dave Wolpin  
- January 30<sup>th</sup>, 2015



Santa Shuffle to raise money for the  
Empty Stocking Fund!

\$215.55

Our school uses Synervoice, school website and e-mail as a means of keeping families informed of upcoming school and community events. Please provide the school with an e-mail address to send notices and newsletters in order to help save the amount of paper we send to your home.

Newsletters are sent by e-mail and posted on our school website at the first of each month. In addition there is a wealth of information for parents as well many pictures of the variety of activities that go on each year and links to teachers' classroom websites. You can check out all this info on our school website at <http://hampton-elementary.nbed.nb.ca>



# Communication

# Alternate Bus Arrangements

Students who require a change in their after school plans, must complete a change of transportation form 24 hours in advance. These changes are not permitted for after school playdates and/or birthday parties.

If there is an emergency, and a change **must** be made, please contact the school as soon as possible.







**Anglophone South School District  
REQUEST FOR STUDENT CONVEYANCE TO AN ALTERNATIVE LOCATION**

Parents/Guardians may request to have their child/children delivered to an alternative address. Students MAY be permitted to travel to an alternative address subject to the following conditions:

- If the service requested occurs on a consistent basis (i.e. daily or every Monday)
- If the request can be accommodated on an existing route and stop within the school of attendance boundary
- If the bus can accommodate extra passengers.

**Please note:** This is a courtesy and services may be withdrawn if conditions change such as route or load levels.

|   |  |  |
|---|--|--|
| Student's Name (Please PRINT information) |  | Date   |
| Student's Home Address                    |  |  |
| School                                    | Grade  |  |
| Parent/Guardian(s) Name(s)                |  |  |
| Phone Number(s)                           |  |  |
| <b>ALTERNATIVE CONVEYANCE REQUEST</b>     |  |  |
| Student's Complete Alternative Address    | Civic #: _____ Street Name/Route: _____<br>Municipality: _____, NB<br>Postal Code: _____ |  |
| Contact's Name                            |  | Phone Number   |
| Dates Required/ Frequency                 |  | <input type="checkbox"/> Pick Up<br><input type="checkbox"/> Drop Off<br><input type="checkbox"/> Both |
| Comments:                                 |  |  |

| BUS NUMBER | STOP LOCATION | TIME |
|------------|---------------|------|
|            |               |      |

Parent Signature \_\_\_\_\_ Date: \_\_\_\_\_

Principal/Designate Signature \_\_\_\_\_ Date: \_\_\_\_\_

DISTRICT OFFICE USE ONLY-----DISTRICT OFFICE USE ONLY

Approved  Denied

Copies: District Office/Transportation/Driver School/Principal Parent revised June '14

[https://secure1.nbed.nb.ca/sites/ASD-S/transportation/Transportation%20Documents/Alternative\\_Bus.pdf](https://secure1.nbed.nb.ca/sites/ASD-S/transportation/Transportation%20Documents/Alternative_Bus.pdf)



# Homework Expectations



A reasonable amount of homework provides an important means to support in the following ways:

- 1) It can periodically allow children to complete unfinished work at home.
- 2) It gives parents an opportunity to reinforce literacy or math facts that have been taught at school.

Homework assignments can be viewed daily in the student agenda. Any important communication between parents and teachers can be recorded in the student agenda.

Homework should take about 10 minutes for each grade level. For example, grade three,  $10 \times 3 = 30$  minutes for that evening.



# Homework Expectations cont.

The classroom teacher will communicate the homework expectations. Homework is designed to reinforce and review work that has already been taught. Homework is to be completed in a reasonable amount of time and if there are any concerns about this, then please contact the classroom teacher.



# Volunteer Opportunities...

1. Volunteer in our classrooms
2. Become a member of Parent School Support Committee - If you are interested in being a member of the PSSC please contact Jamie Foster (Chair) or email [psscchair@gmail.com](mailto:psscchair@gmail.com)
3. Become a member of the Home and School – If you are interested in being a member of the H&S contact Nicole Richardson (President) [hes.homeandschool@gmail.com](mailto:hes.homeandschool@gmail.com)



# Tentative Classroom Configuration 2015-2016

## English Homerooms

Grade 3 English

Grade 3/4 English

Grade 4 English

Grade 5 Eng/Res.  
(Compacted Curriculum)

Grade 5 Intensive French

## French Immersion Homerooms

Grade 3 FI

Grade 3 FI

Grade 4 FI

Grade 4 FI

Grade 5 FI

Grade 5 FI



# Summer Reading

The research is clear that children who don't read during the summer can lose up to three months of reading progress and that loss has a cumulative, long-term effect.

<http://www.readingrockets.org/calendar/summer>

Topics:

- finding a great summer program
- strategies for summer reading for children with dyslexia
- day trips for book lovers



## The ABCs of Improved Reading

**A**ccess to books. It's critical that kids have access to a wide variety of books over the summer months, but we know that access alone doesn't make a strong impact.

**B**ooks that match readers' ability levels and interests. For young people's reading skills to improve, they need to read books that align with their own reading levels. Reading books that are too easy or too hard won't help!

**C**omprehension, as monitored and guided by an adult, teacher or parent. The most important piece to making summer reading effective is the help of an adult who can ask questions and guide kids to better understand what they are reading.

*With these three ingredients, your summer reading program will soar!*



Questions?

THANK YOU

