



# Caledonia Regional High School

## Supporting Learning at a Distance Plan

<b>Grade Level Configuration</b>	6 - 12
<b>Principal</b>	Donna Godfrey
<b>Vice Principal</b>	Emily Ostler Colpitts
<b>Guidance</b>	Heather Lean





# Caledonia Regional High School

## LEARNING AT A DISTANCE PLAN

### **When working together to support learning at a distance ...**

1. Teachers will create an environment that is conducive to learning to help students develop their skills and realize their life and career plans. Activities will be meaningful and engaging and consider the student's needs, interests, and aspirations.
2. Teachers will guide students as they work independently and remain committed to learning (individual and group coaching and follow-up) and ensure that they maintain a real sense of belonging to their class and to their school.
3. Teachers will communicate often with the students and / or parents. They will provide regular updates on progress in the learning plan to students and parents.





# Caledonia Regional High School

## LEARNING AT A DISTANCE PLAN

### Table of Contents

- I. Defining learning at a distance
  - a. Blended Learning in High School
- II. Daily virtual guidelines for students
- III. Social and Emotional Learning (SEL)
- IV. Practical Application
  - a. Middle school instruction times
  - b. High school instruction times
- V. Office hours





# Caledonia Regional High School

## LEARNING AT A DISTANCE PLAN

### SECTION I

#### Defining Learning at a Distance

High school students are expected to follow their course schedule, log into their subject TEAMS sites, and verify their student email each day of their rotational home learning day. There is a provincial expectation that subject teachers dedicate a minimum of 10 minutes per class to a live virtual meeting with students learning from home.

➤ When do students learn at a distance?

- Students in high school on their rotational attendance home learning day.
- Students in Grades 6 – 12 who are ordered to self-isolate or to remain at home by Public Health.
- Students who have a medical note exempting them from attending school during the global pandemic of COVID-19.
- Students in Grades 6 – 12 in the event of a school closure.





# Caledonia Regional High School

## LEARNING AT A DISTANCE PLAN

- |  |  |
|--|--|
| <ul style="list-style-type: none"><li>➤ What does <b>Blended Learning</b> look like for High School students on their designated home learning days?</li></ul> | <ul style="list-style-type: none"><li>➤ Students in Grades 9 – 12 have designated days to learn in school and designated days to learn from home (i.e. Track A and Track B days)</li><li>➤ Teachers designate a minimum of 10 minutes per class to a live virtual meeting with students learning from home.</li><li>➤ Students at home complete the same activity at the same time as students in school.</li><li>➤ Students at home collaboratively work in online spaces (i.e. Breakout rooms) created by the subject teacher.</li><li>➤ Students at home connect with the teacher and class with the expectation of work completion during the designated period.</li></ul> |
|--|--|



# Caledonia Regional High School

## LEARNING AT A DISTANCE PLAN

<b>In the event of a school closure, what can be expected in terms of guided instruction when learning at a distance?</b>	<b>Details</b>
➤ For students in grades 6 – 12	A balance of: <ul style="list-style-type: none"><li>➤ Teacher directed instruction.</li><li>➤ Small group centered learning.</li><li>➤ Student centered learning including discovery activities, personal creative projects, practical life learning, independent reading, interest projects, experiential learning, and physical activity.</li><li>➤ Student attendance will be taken.</li></ul>
➤ For students in Grades 6 – 8	<ul style="list-style-type: none"><li>➤ Learning will be guided by teachers in a virtual environment.</li><li>➤ Support will be provided by teachers to use virtual spaces for learning, collaboration, and teamwork.</li><li>➤ Established course schedule will be maintained unless</li></ul>



# Caledonia Regional High School

## LEARNING AT A DISTANCE PLAN

	otherwise communicated by teachers to students.
➤ For students in Grades 9 – 12	<ul style="list-style-type: none"> <li>➤ Teachers transition to an online learning model for all subject areas.</li> <li>➤ Established course schedule is maintained.</li> <li>➤ Rotational attendance tracks are dissolved.</li> </ul>

<b>How can students prepare to learn at a distance?</b>	
➤ For students in grades 6 – 12	<ul style="list-style-type: none"> <li>➤ Download Free Microsoft Office 365 for Schools and Students</li> <li>➤ Ensure you use your school username and password. All teachers have access to this information if you run into difficulty.</li> <li>➤ Check your student email daily.</li> <li>➤ Activate your TEAMS sites.</li> <li>➤ At designated virtual learning times throughout the instructional day, some teachers will invite students to TEAMS calls coinciding with the subject.</li> </ul>



# Caledonia Regional High School

## LEARNING AT A DISTANCE PLAN

	<ul style="list-style-type: none"><li>➤ The invitation will appear in the student outlook email box.</li><li>➤ Some teachers may not send an invitation to join, but it is expected the teacher and student will be present at the designated time.</li><li>➤ Videos of teacher pre-recorded sessions may appear on your TEAMS site.</li></ul>
--	--







# Caledonia Regional High School

## LEARNING AT A DISTANCE PLAN

### Section II

#### Daily Virtual Guidelines

**In the event of a school closure:**

**Teachers will ensure a balance of both synchronous (real time) and asynchronous instruction to limit student screen time.**

**Teachers may record the “live” (synchronous) instructional aspect (i.e., Not student interactions to maintain privacy) of the lesson for students to access with support when during office hours or another agreed upon convenient time.**

**Virtual learning should provide a balance of teacher-directed, small group centered, and individual support.**

<b>What is the recommended screen time for a learner engaged in a distance learning plan?</b>	
➤ Grade 6 & 7	➤ 120 minutes maximum / day
➤ Grade 8	➤ 150 minutes maximum / day
➤ Grades 6, 7 & 8	➤ Assigned 20 minutes / day of independent reading. ➤ Assigned 30 – 60 minutes / day of physical activity.



# Caledonia Regional High School

## LEARNING AT A DISTANCE PLAN

	<ul style="list-style-type: none"><li>➤ Assigned 15 minutes of independent home learning to follow up to each online session</li></ul>
<ul style="list-style-type: none"><li>➤ Grades 9, 10, 11 &amp; 12</li></ul>	<ul style="list-style-type: none"><li>➤ 3 hours / day (approximately 40 minutes /course).</li><li>➤ In-class time for instruction of learning expectations that require the most teacher support and for formative assessment of skills that are best assessed in person.</li><li>➤ Out of class time for learning outcomes that can be completed independently or in small online groups for practice of developing skills, for preparing for in class time for following up on in class work.</li></ul>





# Caledonia Regional High School

## LEARNING AT A DISTANCE PLAN

### Section III

#### Social Emotional Learning (SEL)

**Research confirms and teachers, parents, and principals agree: Social and emotional competencies can be taught, modeled, and practiced and lead to positive student outcomes that are important for success in school and in life.**

#### **Benefits of Social Emotional Learning**

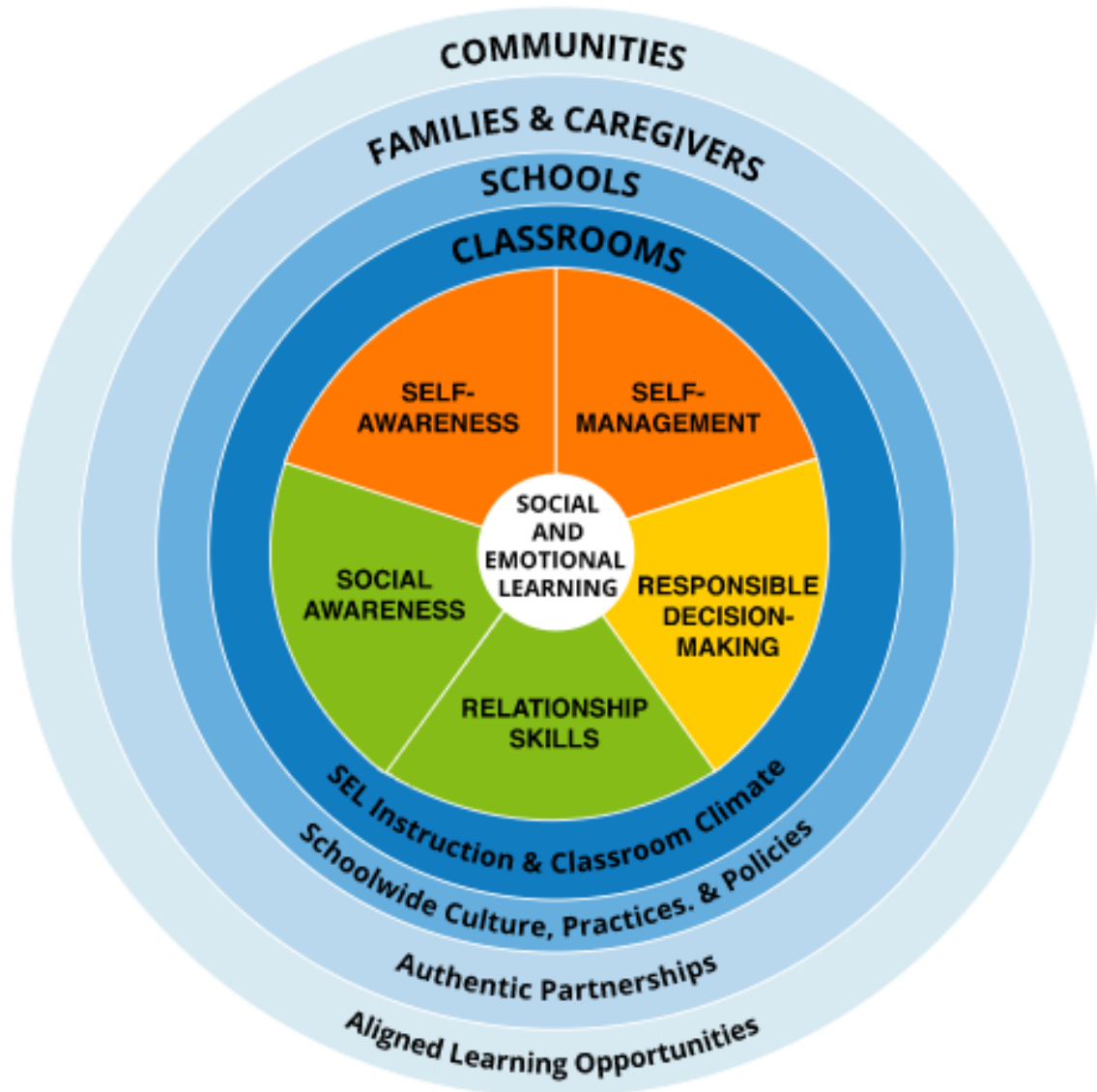
- 1. Improvement in students' social and emotional skills, attitudes, relationships, academic performance, and perceptions of classroom and school climate.**
- 2. Long-term improvements in students' skills, attitudes, prosocial behaviour, and academic performance.**
- 3. Decline in students' anxiety, behaviour problems, and substance use.**
- 4. Wise financial investment according to cost-benefit research.**

**Visit: <https://casel.org/what-is-sel/>**



# Caledonia Regional High School

## LEARNING AT A DISTANCE PLAN





# Caledonia Regional High School

## LEARNING AT A DISTANCE PLAN

### Section IV

#### Practical Application of Learning at a distance

In the event of a school closure, the following scheduled distance learning instructional times will apply. Teachers will reach out to students at designated times below.

#### Distance Learning Middle School Schedules per bubble





# Caledonia Regional High School

## LEARNING AT A DISTANCE PLAN

### A. Grade 6 English

Scheduled Distance Learning Instructional Times	Homeroom teacher: Ms. Milton				
	Monday	Tuesday	Wednesday	Thursday	Friday
9am	English Language Arts – Ms. Milton	Physical Activity – Mr. Boyce	Physical Activity – Mr. Boyce	English Language Arts – Ms. Milton	English Language Arts – Ms. Milton
10 am	French Mrs. Strohmayer	French Mrs. Strohmayer	Art Mrs. Strohmayer	French Mrs. Strohmayer	French Mrs. Strohmayer
11 am	Music – Ms. Masson	English Language Arts – Ms. Milton	English Language Arts – Ms. Milton	PDCP Health – Mme Pellerin	BBT – Mr. Kelly
1 pm	Math – Ms. Milton	Math – Ms. Milton	Math – Ms. Milton	Math – Ms. Milton	Math – Ms. Milton
2 pm S2 – February – June 2021	S1 – Social Studies – Ms. Milton. S2 – Science – Ms. Milton	S1 – Social Studies – Ms. Milton. S2 – Science – Ms. Milton	S1 – Social Studies – Ms. Milton. S2 – Science – Ms. Milton	S1 – Social Studies – Ms. Milton. S2 – Science – Ms. Milton	S1 – Social Studies – Ms. Milton. S2 – Science- Ms. Milton



# Caledonia Regional High School

## LEARNING AT A DISTANCE PLAN

### B. Grade 6 French Immersion

Scheduled Distance Learning Instructional Times	Homeroom Teacher: M Roy				
	Monday	Tuesday	Wednesday	Thursday	Friday
<b>9 am</b> <b>S2 – February – June 2021</b>	S1 PDCP Health - M Roy S2 PDCP Health - M Roy	S1 Social Studies - M Roy S2 Science – M Roy	S1 Social Studies - M Roy S2 Science – M Roy	S1 Social Studies – M Roy S2 Science - M Roy	S1 Social Studies – M Roy S2 Science - M Roy
<b>10 am</b>	French – M Roy	French – M Roy	French – M Roy	French – M Roy	French – M Roy
<b>11 am</b>	Physical Activity – Mr. Boyce	Art – Mrs. Strohmayr	Physical Activity – Mr. Boyce	BBT – Mr. Kelly	Music – Ms. Masson
<b>1 pm</b>	English Language Arts – Ms. Finn	English Language Arts– Ms. Finn	English Language Arts – Ms. Finn	English Language Arts– Ms. Finn	English Language Arts – Ms. Finn
<b>2 pm</b>	Math –M Fortin	Math – M Fortin	Math – M Fortin	Math – M Fortin	Math – M Fortin



# Caledonia Regional High School

## LEARNING AT A DISTANCE PLAN

### C. Grade 7 English

Scheduled Distance Learning Instructional Times	Homeroom Teacher; Mr. Kelly				
	Monday	Tuesday	Wednesday	Thursday	Friday
9 am	Math – Mr. Kelly	Math – Mr. Kelly	Math – Mr. Kelly	Math – Mr. Kelly	Math – Mr. Kelly
10 am	English Language Arts – Ms. Finn	English Language Arts – Ms. Finn	English Language Arts – Ms. Finn	English Language Arts – Ms. Finn	English Language Arts – Ms. Finn
11 am	PDCP Health – Mme Pellerin	Physical Activity – Mr. Boyce	BBT – Mr. Kelly	Music – Ms. Masson	Art – Mrs. Strohmayer
1 pm	French Mme Pellerin	French – Mme Pellerin	French – Mme Pellerin	French – Mme Pellerin	French – Mme Pellerin
2 pm S2 – February – June 2021	S1 Social Studies – Mrs. Strohmayer S2 Science - Mrs. Strohmayer	S1 Social Studies – Mrs. Strohmayer S2 Physical Activity – Mr. Boyce	S1 Social Studies – Mrs. Strohmayer S2 Science – Mrs. Strohmayer	S1 Social Studies – Mrs. Strohmayer S2 Science – Mrs. Strohmayer	S1 Social Studies – Mrs. Strohmayer S2 Science – Mrs. Strohmayer





# Caledonia Regional High School

## LEARNING AT A DISTANCE PLAN

### D. Grade 7 French Immersion

Scheduled Distance Learning Instructional Times	Homeroom Teacher: Mme Pellerin				
	Monday	Tuesday	Wednesday	Thursday	Friday
<b>9 am</b> <b>S2 – February – June 2021</b>	S1 Social Studies – Mme Pellerin  S2 Science – Mme Pellerin	S1 Social Studies – Mme Pellerin  S2 Science – Mme Pellerin	S1 Social Studies – Mme Pellerin  S2 Science – Mme Pellerin	S1 Social Studies – Mme Pellerin  S2 Science – Mme Pellerin	S1 Social Studies – Mme Pellerin  S2 Science – Mme Pellerin
<b>10 am</b>	English Language Arts – Ms. Milton	English Language Arts – Ms. Milton	English Language Arts – Ms. Milton	English Language Arts – Ms. Milton	English Language Arts – Ms. Milton
<b>11 am</b>	BBT – Mr. Kelly	Music – Ms. Masson	PDCP – Health – Mme Pellerin	Art – Mrs. Strohmayer	PDCP – Health - Mme Pellerin
<b>1 pm</b>	Math - M Fortin	Math - M Fortin	Math - M Fortin	Maths – M Fortin	Maths – M Fortin
<b>2 pm</b>	French – Mme Kadem	French – Mme Kadem	French – Mme Kadem	French - Mme Kadem	French – Mme Kadem



# Caledonia Regional High School

## LEARNING AT A DISTANCE PLAN

### E. Grade 8 English

Scheduled Distance Learning Instructional Times	Homeroom Teacher: Ms. Flinn				
	Monday	Tuesday	Wednesday	Thursday	Friday
9 am	English Language Arts – Ms. Flinn	English Language Arts – Ms. Flinn	English Language Arts – Ms. Flinn	Physical Activity – Mr. Boyce	Physical Activity – Mr. Boyce
10 am	French – Ms. Masson	French – Ms. Masson	French – Ms. Mason	French – Ms. Masson	Music – Ms. Masson
11 am S2 – February – June 2021	S1 Social Studies – Ms. Flinn  S2 Science – Ms. Flinn	PDCP Health – Mme Pellerin	Art – Mrs. Strohmayer	English Language Arts – Ms. Flinn	English Language arts – Ms. Flinn
1 pm	Math – Mr. Steeves	Math- Mr. Steeves	Math – Mr. Steeves	Math – Mr. Steeves	Math – Mr. Steeves
2 pm	BBT – Mr. Boyce	S1 Social Studies – Ms. Flinn  S2 Science - Ms. Flinn	S1 Social Studies – Ms. Flinn  S2 Science – Ms. Flinn	S1 Social Studies – Ms. Flinn  S2 Science- Ms. Flinn	S1 Social Studies – Ms. Flinn  S2 Science – Ms. Flinn



# Caledonia Regional High School

## LEARNING AT A DISTANCE PLAN

### F. Grade 8 French Immersion

Scheduled Distance Learning Instructional Times	Homeroom Teacher: Mme Kadem				
	Monday	Tuesday	Wednesday	Thursday	Friday
9 am	French – Mme Kadem	French – Mme Kadem	French - Mme Kadem	French – Mme Kadem	French – Mme Kadem
10 am	Math – M Fortin	Math – M Fortin	Math- M Fortin	Math – M Fortin	Math – M Fortin
11 am	Art – Mrs. Strohmayr	BBT – Mr. Kelly	Music – Ms. Masson	Physical Activity – Mr. Boyce	Physical Activity – Mr. Boyce
1 pm	English Language Arts – Mr. Patterson	English Language Arts – Mr. Patterson	English Language Arts – Mr. Patterson	English Language Arts – Mr. Patterson	English Language Arts – Mr. Patterson
2 pm S2 – February – June 2021	S1 PDCP Health – Mme Pellerin S2 PDCP Health – Mme Pellerin	S1 Social Studies - Mme Pellerin S2 Science – Mme Pellerin	S1 Social Studies – Mme Pellerin S2 Science – Mme Pellerin	S1 Social Studies - Mme Pellerin S2 Science – Mme Pellerin	S1 Social Studies – Mme Pellerin S2 Science – Mme Pellerin



# Caledonia Regional High School

## LEARNING AT A DISTANCE PLAN

### High School Courses with teacher identified

**Mrs. Babineau**

Subject		Scheduled Distance Learning Instructional Times
<b>S 1</b>	<b>S 2 (February - June 2021)</b>	
English LA 122(3)	English LA 122(3)	<b>9 am</b>
English LA 112	English LA 112	<b>10 am</b>
Journalism 12	World Issues 12	<b>11 am</b>
Office Hours	Office Hours	<b>1 pm</b>
English LA 10	English LA 10	<b>2 pm</b>

**Mme Cremers**

Subject		Scheduled Distance Learning Instructional Times
<b>S 1</b>	<b>S 2 (February - June 2021)</b>	
FILA 12	FILA 11	<b>9 am</b>
10 Eng Science	9/10 FI Science	<b>10 am</b>
Biology 11	FI Environmental Science	<b>11 am</b>
Biology 11	Biology 12	<b>1 pm</b>
Office Hours	Office Hours	<b>2 pm</b>



# Caledonia Regional High School

## LEARNING AT A DISTANCE PLAN

### Mrs. Dixon-Lipton

Subject		Scheduled Distance Learning Instructional Times
<b>S 1</b>	<b>S 2 (February - June 2021)</b>	
10 Social Studies	Grit, Growth & Goals 120	<b>9 am</b>
English LA 112 (3)	English LA 112(3)	<b>10 am</b>
Early Childhood 11	Modern History 112(3)	<b>11 am</b>
Family Dynamics 12	Office Hours	<b>1 pm</b>
Office Hours	Child Studies 12	<b>2 pm</b>

### Mrs. Elliott

Scheduled Distance Learning Instructional Times	
<b>S 1</b>	
Blended Learning	<b>9 am</b>
Office Hours	<b>10 am</b>
Blended Learning	<b>11 am</b>
Blended Learning	<b>1 pm</b>
Blended Learning	<b>2 pm</b>





# Caledonia Regional High School

## LEARNING AT A DISTANCE PLAN

### M Fortin

Subject		Scheduled Distance Learning Instructional Times
<b>S 1</b>	<b>S 2 (February - June 2021)</b>	
9/10 FI GMF	9/10 FI NRF	<b>9 am</b>
8 FI Math	8 FI Math	<b>10 am</b>
Office Hours	Office Hours	<b>11 am</b>
7 FI Math	7 FI Math	<b>1 pm</b>
6 FI Math	6 FI Math	<b>2 pm</b>

### Mrs. Godbout

Subject		Scheduled Distance Learning Instructional Times
<b>S 1</b>	<b>S 2 (February - June 2021)</b>	
Foundations 11	Foundations 11	<b>9 am</b>
Pre Calc A 12	Calculus 12	<b>10 am</b>
Office Hours	Pre Calc 11	<b>11 am</b>
Pre Calc B 12	Office Hours	<b>1 pm</b>
Chemistry 11	Chemistry 12	<b>2 pm</b>



# Caledonia Regional High School

## LEARNING AT A DISTANCE PLAN

### Mme Kadem

Subject		Scheduled Distance Learning Instructional Times
S 1	S 2 (February - June 2021)	
8 FILA	8 FILA	9 am
9/10 FI Social Studies	FI 9/10 Science	10 am
9/10 FILA	9 FI PDCP / Health	11 am
Office Hours	Office Hours	1 pm
7 FILA	7 FILA	2 pm

### Mr. Kelly

Subject		Scheduled Distance Learning Instructional Times
S 1	S 2 (February - June 2021)	
7 English Math	7 English Math	9 am
Media Studies 12	Office Hours	10 am
MS BBT	MS BBT	11 am
9/10 BBT	9/10 BBT	1 pm
Office Hours	9 PDCP	2 pm





# Caledonia Regional High School

## LEARNING AT A DISTANCE PLAN

**Ms. Lean : Appointments can be scheduled by students, parents, and teachers. To book an appointment, visit the home page of our Caledonia website and on the Guidance TEAMS page.**

Subject		Scheduled Distance Learning Instructional Times
<b>S 1</b>	<b>S 2 (February - June 2021)</b>	
Office Hours	Office Hours	<b>9 am</b>
Scheduled Appointments	Scheduled Appointments	<b>10 am</b>
Scheduled Appointments	Scheduled Appointments	<b>11 am</b>
Scheduled Appointments	Scheduled Appointments	<b>1 pm</b>
Scheduled Appointments	Scheduled Appointments	<b>2 pm</b>

### Mrs. Macintyre

Subject		Scheduled Distance Learning Instructional Times
<b>S 1</b>	<b>S 2 (February - June 2021)</b>	
EA collaboration	EA collaboration	<b>9 am</b>
PLP review and maintenance	PLP review and maintenance	<b>10 am</b>
Student / Family check-ins	Student / Family check-ins	<b>11 am</b>
Student programming	Student programming	<b>1 pm</b>
Office Hours	Office Hours	<b>2 pm</b>





# Caledonia Regional High School

## LEARNING AT A DISTANCE PLAN

### Ms. Masson

Subject		Scheduled Distance Learning Instructional Times
S 1	S 2 (February - June 2021)	
Office Hours	PIF 10	9 am
8 PIF	8 PIF	10 am
MS Music	MS Music	11 am
9/10 Music	9/10 Music	1 pm
9 French (PIF)	Office Hours	2 pm

### Mrs. Franklin

Scheduled Distance Learning Instructional Times	
S 2	
Office Hours	9 am
Student Programming	10 am
Student Programming	11 am
Student Programming	1 pm
Student Programming	2 pm





# Caledonia Regional High School

## LEARNING AT A DISTANCE PLAN

### Mr. Patterson

Subject		Scheduled Distance Learning Instructional Times
S 1	S 2 (February - June 2021)	
Office Hours	Office Hours	9 am
9 English LA	9 English LA	10 am
9 Social Studies	9 Science	11 am
8 FI English LA	8 FI English LA	1 pm
9/10 Fi English LA	9/10 FI English LA	2 pm

### Mrs. Robertson (Dutcher)

Subject		Scheduled Distance Learning Instructional Times
S 1	S 2 (February - June 2021)	
Essential Skills	Essential Skills	9 am
Essential Skills	Essential Skills	10 am
Office Hours	Office Hours	11 am
9/10 Art	9/10 Art	1 pm
Graphic Art & Design 11	Fashion Design 12	2 pm





# Caledonia Regional High School

## LEARNING AT A DISTANCE PLAN

### Mr. Robertson

Subject		Scheduled Distance Learning Instructional Times
<b>S 1</b>	<b>S 2 (February - June 2021)</b>	
Financial & Workplace Math 11	Office Hours	<b>9 am</b>
Office Hours	Mill & Cabinet 12	<b>10 am</b>
Metals 11	Intro to Applied Tech 11	<b>11 am</b>
Site Layout & Foundation 11	Electrical Wiring 12	<b>1 pm</b>
Framing & Sheathing 11	Residential Finish 12	<b>2 pm</b>

### M Roy

Subject		Scheduled Distance Learning Instructional Times
<b>S 1</b>	<b>S 2 (February - June 2021)</b>	
6 FI Social Studies	6 FI Science	<b>9 am</b>
6 FILA	6 FILA	<b>10 am</b>
FI Family Dynamics 12	FI Modern History 112	<b>11 am</b>
Office Hours	Indigenous Studies 11	<b>1 pm</b>
Outdoor Pursuits 11	Office Hours	<b>2 pm</b>



# Caledonia Regional High School

## LEARNING AT A DISTANCE PLAN

### Mr Steeves

Subject		Scheduled Distance Learning Instructional Times
S 1	S 2 (February - June 2021)	
9 Math	9 Math	9 am
Office Hours	10 NRF	10 am
10 GMF	Office Hours	11 am
8 Math	8 Math	1 pm
Physics 11	Physics 12	2 pm





# Caledonia Regional High School

## LEARNING AT A DISTANCE PLAN

### Section VI Office Hours

During Designated Office Hours, staff can prioritize the following:

- Send and reply to emails.
- Make phone connections with home.
- Follow-up with students who have not connected on the Microsoft TEAMS platform.
- Lesson planning
- Evaluation of evidence
- In addition to the office hours designated below, all staff have daily office hours from 8:45-9 am and 3 – 3:15.
- S1= Semester 1 (September 2020 – end of January 2021)
- S2=Semester 2 (February – June 2021)





# Caledonia Regional High School

## LEARNING AT A DISTANCE PLAN

Staff	Monday	Tuesday	Wednesday	Thursday	Friday
<b>Donna Godfrey Principal</b>	8:30 – 5 pm Evening as necessary	8:30 – 5 pm Evening as necessary	8:30 – 5 pm Evening as necessary	8:30 – 5 pm Evening as necessary	8:30 – 5 pm Evening as necessary
<b>Emily Ostler-Colpitts Vice Principal</b>	8:30 – noon	8:30 – noon	8:30 – noon	8:30 – noon	8:30-noon
<b>Heather Lean Guidance</b>	9-10 am	9-10 am	9-10 am	9-10 am	9-10 am
<b>Claudia Babineau</b>	1 – 2 pm	1 – 2 pm	1 – 2 pm	1 – 2 pm	1 – 2 pm
<b>Neil Boyce</b>	10-11 am	10-11 am	10-11 am 2-3 pm	2-3 pm	2-3 pm
<b>Caroline Cremers</b>	2 – 3 pm	2- 3 pm	2-3 pm	2-3 pm	2-3 pm
<b>Mrs. Dixon-Lipton</b>	S1: 2 – 3 pm	S1: 2 – 3 pm	S1: 2 – 3 pm	S1: 2 – 3 pm	S1: 2 – 3 pm
	S2: 1-2 pm	S2: 1-2 pm	S2: 1-2 pm	S2: 1-2 pm	S2: 1-2 pm
<b>Mrs. Elliott</b>	S1: 10 – 11 am	S1: 10 – 11 am	S1: 10 – 11 am	S1: 10-11 am	S1:10 – 11 am
<b>Ms. Flinn</b>	2-3 pm	11-noon	11-noon	9-10 am	9-10 am
<b>M Fortin</b>	11-noon	11-noon	11-noon	11-noon	11-noon
<b>Mrs. Godbout</b>	S1: 11-noon	S1: 11-noon	S1: 11-noon	S1: 11-noon	S1: 11-noon
	S2: 1-2 pm	S2: 1-2 pm	S2: 1-2 pm	S2: 1-2 pm	S2: 1-2 pm
<b>Mme Kadem</b>	S1: 1-2 pm	S1: 1-2 pm	S1: 1-2 pm	S1: 1-2 pm	S1: 1-2 pm
	S2: 10-11 am	S2: 10-11 am	S2: 10-11 am	S2: 10-11 am	S2: 10-11 am
<b>Mr. Kelly</b>	10 – 11 am	10 – 11 am	10 – 11 am	10 – 11 am	10 – 11 am



# Caledonia Regional High School

## LEARNING AT A DISTANCE PLAN

	<b>Monday</b>	<b>Tuesday</b>	<b>Wednesday</b>	<b>Thursday</b>	<b>Friday</b>
<b>Ms. Masson</b>	S1: 9-10 am	S1: 9-10 am	S1: 9-10 am	S1: 9-10 am	S1: 9-10 am
	S2: 2-3 pm	S2: 2-3 pm	S2: 2-3 pm	S2: 2-3 pm	S2: 2-3 pm
<b>Ms. Milton</b>	11-noon	9-10 am	9-10 am	10-11 am	10-11 am
<b>Mr. Patterson</b>	9-10 am	9-10 am	9-10 am	9-10 am	9-10 am
<b>Ms. Parsons</b>	9 – 10 am	9 – 10 am	9 – 10 am	9 – 10 am	9 – 10 am
<b>Mme Pellerin</b>	9-10 am	10-11 am	10-11 am	10-11 am	10-11 am
	10-11 am				11-noon
<b>Mrs. Robertson</b>	11-noon	11-noon	11-noon	11-noon	11-noon
<b>Mr. Robertson</b>	9-10 am	9-10 am	9-10 am	9-10 am	9-10 am
<b>M Roy</b>	S1: 1-2 pm	S1: 1-2 pm	S1: 1-2 pm	S1: 1-2 pm	S1: 1-2 pm
	S2: 2-3 pm	S2: 2-3 pm	S2: 2-3 pm	S2: 2-3 pm	S2: 2-3 pm
<b>Mr. Steeves</b>	S1: 10-11 am	S1: 10-11 am	S1: 10-11 am	S1: 10-11 am	S1: 10-11 am
	S2: 11-noon	S2: 11-noon	S2: 11-noon	S2: 11-noon	S2: 11-noon
<b>Mrs. Strohmayer</b>	NA	9-10 am 2-3 pm	9-10 am	9 – noon	9-10 am

